

# THE VOICE OF MONETARY POLICY

Yuriy Gorodnichenko                      Tho Pham                      Oleksandr Talavera  
University of California,                  University of Reading                  University of Birmingham  
Berkeley

First draft: October 31, 2020

This draft: July 02, 2021

**Abstract:** We develop a deep learning model to detect emotions embedded in press conferences after the meetings of the Federal Open Market Committee and examine the influence of the detected emotions on financial markets. We find that, after controlling for the Fed’s actions and the sentiment in policy texts, positive tone in the voices of Fed Chairs leads to statistically significant and economically large increases in share prices. In other words, *how* policy messages are communicated can move the stock market. In contrast, the bond market appears to take few vocal cues from the Chairs. Our results provide implications for improving the effectiveness of central bank communications.

Keywords: monetary policy, communication, voice, emotion, text sentiment, stock market, bond market.

JEL: E31, E58, G12, D84

Acknowledgements: We thank Annette Vissing-Jorgensen, Michael Ehrmann, and seminar/conference participants at University of Reading, University of Birmingham, University of East Anglia, UC Davis, FED Cleveland, Economic Policy Working Group – Hoover Institution, and ESCoe Economic Measurement 2021 conference for comments. We are grateful to Eric Swanson for sharing his series of monetary policy shocks.

*“How can a president not be an actor?”*

*Ronald Reagan (1980)*

*“As Chairman, I hope to foster a public conversation about what the Fed is doing to support a strong and resilient economy. And one practical step in doing so is to have a press conference like this after every one of our scheduled FOMC meetings. ... [This] is only about improving communications.”*

*Jerome Powell (2018)<sup>1</sup>*

*“The press conference, though, that is coming up in just a few minutes is where traders are really going to be looking for every little nuance. They want to see how he is going to read into everything. The tone of his voice, his body language, his inflection, for any clue about the direction the markets are still looking for.”*

*CNN International Quest Means Business (2011)*

## **1 Introduction**

In a famous analysis, Mehrabian (1971) posited a 7-55-38 rule of communication: the words convey 7 percent of a message, the body language (gestures, facial expressions, etc.) accounts for 55 percent, and the tone delivers 38 percent. While the debate on exact percentages for each channel is open, it is clear that effective communication has to rely on more than just words. Central banks have been increasingly relying on communication-based tools (e.g., forward guidance) to manage the public’s expectations, but do central bankers utilize communication to its full potential?

Textual analyses of policy statements, minutes, and transcripts (e.g., Rozkrut et al., 2007; Hansen and McMahon, 2016, Hansen et al., 2018, Cieslak et al., 2019, Ehrmann and Talmi, 2020) suggest that central bankers’ words carry a lot of weight,<sup>2</sup> but little is known about the effects of their non-verbal communication. To shed more light on this issue, we use deep learning methods to quantify tone (vocal emotions) embedded in the answers given by Federal Reserve Chairs during press conferences. To the best of our knowledge, our study is the first to examine the effects of central bank communications through the vocal dimension. In other words, we move beyond text analysis and study *how* policy messages are voiced and whether emotions within voice tone can move financial markets.

We focus on policy communication during press conferences for several reasons. First, press conferences have been commonly used as an important communication tool. As suggested

---

<sup>1</sup> <https://www.federalreserve.gov/mediacenter/files/FOMCpresconf20180613.pdf>

<sup>2</sup> More generally, central banks have significant power to influence the macroeconomy and expectations. For example, a large number of studies have documented the effectiveness of policy announcements in moving financial markets (e.g., Kuttner, 2001, Gurkaynak et al., 2005) or shaping firm and household inflation expectations (e.g., Coibion et al., 2019; Enders et al., 2019; Lamla and Vinogradov, 2019).

by Ehrmann and Fratzche (2007) and emphasized by Powell (2018), press conferences, particularly the Q&A sessions, play a key role in helping financial markets and the general public to understand policy outlook and the interpretation of current economic conditions. Especially during times of high uncertainty, market participants tend to seek further guidance/clarification through press conferences' Q&A sessions. Second, press conferences allow policymakers to go off script and communicate soft information via non-verbal channels, thus influencing investors' decision making.<sup>3</sup> Finally, because video/audio recordings of press conferences are available in a consistent format,<sup>4</sup> we can measure the tone of communication in a consistent manner and provide a systematic analysis of how voice tone can influence economic outcomes.

Specifically, we split a given FOMC press conference during the 2011 – June 2019 period into audio segments corresponding to each question raised during the event and the response of the speaker. The split audios are then run through a machine-learning procedure, which is trained to recognize emotions from voice variations. Each answer is rated in terms of three emotions: positive (happy or pleasantly surprised emotions), negative (sad or angry emotions), and neutral. After aggregating the tone of the answers for a given press conference, we examine how the tone affects a variety of financial variables at high frequencies. We find that the tone can materially move financial markets. For example, switching the tone of the press conference from negative (-1) to positive (+1) could raise S&P 500 returns by approximately 200 basis points. This order of magnitude is comparable to what one can observe after a two-standard deviation shock to forward guidance. In other words, the voice component can generate economically large effects on the stock market. We also find that inflation expectations and exchange rates respond to the variation in voice tone, e.g., a more positive tone leads to a decrease in expected inflation. At the same time, there is no evidence of bond market reactions to voice variations in our sample. These results suggest that policy communication is more nuanced than reading and/or posting prepared remarks and speeches. It appears that a certain level of acting skill may be helpful to ensure that the public receives the policy message fully and correctly.

---

<sup>3</sup> Caffi and Janney (1994), Visschedijk et al. (2013), Dricu et al. (2017), and others document that voice conveys information beyond the verbal content and that information contained in voice can affect decision making.

<sup>4</sup> Video recordings can be used to study body language (e.g., facial expressions, gestures). However, videos are harder to analyze because cameras are moving (different speakers, different angles). In this respect, audio tracks offer a more consistent measurement.

In addition to the vast literature on policy communication (see Blinder et al., 2008 and Coenen et al., 2017 for comprehensive surveys) and high-frequency analyses of monetary policy shocks (e.g., Kuttner, 2001, Gurkaynak et al., 2005, and many others), our study relates to research investigating the economic impacts of vocal cues. Using a sample of CEOs' speeches during earnings conference calls, Hobson et al. (2012) find that the vocal markers of cognitive dissonance can predict the likelihood of irregular restatements of earning reports. In a related study, Mayew and Venkatachalam (2012) show that market participants and analysts react to the affective states of managers expressed through vocal cues, such as happy or unhappy voices. For example, positive affect is positively related to changes in stock recommendations and future unexpected earnings. These results suggest that the affective states contain useful information about firms' fundamentals. In a more recent study, Hu and Ma (2020) find that positivity about a startup, shown through the visual, verbal, and vocal dimensions, increases the likelihood of being funded even if the startup's quality is low. Apart from having a different focus (central banking communication vs. CEO/manager communication), we differ in the tools employed to quantify the variation in tone. Earlier studies use commercial software or pre-trained machine learning algorithms for voice analysis, while we develop a customized deep learning model for detecting speech emotion. Our approach offers several advantages in terms of flexibility, room for further development, and implementations. For example, we can fine-tune the model's parameters to achieve a higher accuracy rate, which is not a feature available to commercial software. Similarly, the customized model allows us to adjust the number and/or the class of emotions, which also cannot be done with commercial software and pre-trained algorithms.

The rest of this paper is organized as follows. In the next section, we describe the financial, text, and speech data used in the analysis and how the data are analyzed. Section 3 presents our empirical analyses and results. Section 4 concludes and discusses implications.

## **2 FOMC speeches: voice and linguistic analysis**

Our sample runs from 2011 (when the first press conference was held) to June 2019. During this period, 67 meetings and 36 press conferences were held. For each meeting, the FOMC statement and the transcript of the press conference are collected from the Federal Reserve (Fed) website. The press conferences' videos are downloaded from the Fed's official Youtube channel. We use only the audio

component of these videos. Because the Q&A session is the only part of the press conference that is not scripted, our analysis focuses on the answers of the Chair during the Q&A. Our audio sample contains 692 answers of 3 speakers (Ben Bernanke, Janet Yellen, and Jerome Powell).

## 2.1 *Voice Tone*

In this section, we describe how we train a neural network model (a deep learning algorithm) to recognize emotions. We also explain the mechanism of the neural network algorithm and how it is applied to predict voice emotion.

### 2.1.1 Emotion Detection Using Neural Networks

Voice can be characterized by various parameters such as pitch (indicating the level of highness/lowness of a tone) and frequency (indicating the variation in the pitch) which are useful in determining the mood/emotion of a speaker. Building on earlier research on voice recognition (e.g., Pan et al., 2012; Gao et al., 2017; Likitha et al., 2017; Bhavan et al., 2019), we use Librosa, a Python package, to extract the following vocal features: 40 Mel-frequency cepstral coefficients (MFCCs), 12 Chroma coefficients (Chromagram), and 128 Mel Spectrogram Frequencies (Mel). These features are later used as inputs for our deep learning model.

We use two data sets to train and validate our model. The first is the Ryson Audio-Visual Database of Emotional Speech and Song (RAVDESS). To create these data, 12 actors and 12 actresses speak two statements in a neutral North American accent and 8 emotions (calm, happy, sad, angry, fearful, surprised, disgust, neutral). The second data set is the Toronto Emotional Speech Set (TESS). To create these data, 2 actresses speak a set of 200 words in 7 emotions (happy, sad, angry, fearful, pleasantly surprised, disgust, neutral). These data sets are widely used in the computer science literature to build the speech emotion/expression systems (see, e.g., Verma and Mukhopadhyay, 2016, Gao et al., 2017, Choudhury et al., 2018, Bhavan et al., 2019, Andersson, 2020). Because fearful/disgust emotions are unlikely to arise during the Q&A sessions, we only use audios for 5 emotions: happy, (pleasantly) surprised, neutral, sad, and angry.

After extracting the vocal features from each recording in RAVDESS and TESS, we build a neural network model, i.e., a computing system consisting of different layers where each layer

is a collection of different neurons (nodes). The output of one layer is used as the input for the preceding layer. We illustrate the mechanism behind a neural network comprised of three fully connected layers in Figure 1. The first layer in this network is the input layer with three nodes and each node is a feature of the training audio data. The second layer is a hidden layer consisting of four nodes ( $HK_k, k=[1;4]$ ) which are the activation functions of the input features  $IN_i (i=[1;3])$ . Particularly, a node  $HK_k$  is connected with the input through weight ( $w_{k,i}$ ) and bias ( $b_k$ ):  $\sum_{i=1}^3 IN_i \times w_{k,i} + b_k$ . The weighted summations are passed on an activation function such as a binary step function, linear activation function, or non-linear activation function, to obtain the outputs  $O_k (k=[1;4])$ . Applying the same procedure on these outputs gives us the final output (i.e., the classification of emotion). We use 80% of RAVDESS and TESS as the training sample and the remaining 20% are used for validation.

After experimenting with different hyper-parameters of the neural network, e.g., using different types of layers, different combinations of those layers, and different activation functions, we obtain a network containing 4 fully connected (dense) layers (i.e., 2 hidden layers). This trained model gives us an accuracy score of 84%. The accuracy in predicting angry, sad, neutral, surprised, and happy emotion is 87%, 84%, 74%, 87%, and 80%, respectively.<sup>5</sup>

### 2.1.2 Emotion Detection Output

After training the neural network to recognize emotions from variations in vocal features (MFCCs, Chromagram, and Mel Spectrogram), we feed the audio tracks of the policymakers’ answers into the neural network and classify the answer into positive (“happy” or “pleasantly surprised”), negative (“sad” or “angry”), or neutral. We measure the tone of responses for a given Q&A session as follows:

$$VoiceTone = \frac{Positive\ answers - Negative\ answers}{Positive\ answers + Negative\ answers} \quad (1)$$

where *VoiceTone* ranges from -1 (negative emotions) to +1 (positive emotions). We report descriptive statistics in Panel A of Table 1 and scores for each Q&A session in Appendix Table 1.

---

<sup>5</sup> A detailed discussion of our neural network model is provided in Appendix B.

We find that Ben Bernanke on average had more positive emotions in his voice than Janet Yellen, who in turn had generally more positive emotions in her voice than Jerome Powell. Bernanke had five Q&A sessions with only positive emotions in his voice. In contrast, Jerome Powell had five Q&A sessions with only negative emotions. Janet Yellen’s sessions always had a mix of positive and negative emotions. The average tone across these central bankers is close to zero. There is considerable within-speaker variation in tone, with Jerome Powell exhibiting the largest variation.

## 2.2 Textual Analysis

Similar to Apel and Grimaldi (2014) and Neuhierl and Weber (2019), we use a “search and count” approach to classify the text sentiment into hawkish versus dovish sentiment. In particular, we build four lists of nouns, adjectives, and verbs of which combinations will indicate either tight monetary policy/strong economic outlook (i.e., hawkish) or expansionary monetary policy/weak economic outlook (i.e., dovish). As indicated in Table 2, a phrase combined of (1) A1 and A2 or (2) B1 and B2 is classified as “dovish” while a phrase combined of (1) A1 and B2 or (2) B1 and A2 is classified as “hawkish”. To increase the accuracy of our classification, the search and count approach is performed on each part of a sentence then aggregated over the whole document.<sup>6</sup> Since negations such as “won’t”, “aren’t” can alter the meaning of the text, for each part of a text, a hawkish (dovish) phrase is only counted as hawkish (dovish) if the text does not contain a negation word/phrase. In contrast, if a hawkish phrase is accompanied by a negation word/phrase, then it is counted as dovish and vice versa.<sup>7</sup> The number of dovish and hawkish phrases detected in FOMC press releases and press conferences’ transcripts are reported in Panel B of Table 1. The dovish phrases are generally used more often in FOMC communications during the examined period.

We use the following formula to measure the aggregate sentiment of the text of an FOMC statement/remarks/Q&A:

---

<sup>6</sup> For example, the sentence “With inflation running persistently below this longer-run goal, the Committee will aim to achieve inflation moderately above 2 percent for some time so that inflation averages 2 percent over time and longer-term inflation expectations remain well anchored at 2 percent” contains 2 parts, “With inflation running persistently below this longer-run goal” and “the Committee will aim to...2 percent”. Search and count is performed on each part separately, then aggregated over the whole sentence, and then aggregated over the whole document.

<sup>7</sup> A similar approach was applied in Cieslak and Vissing-Jorgensen (2020), where a negative word accompanied by “not” is considered positive.

$$TextSentiment = \frac{Dovish\ phrases - Hawkish\ phrases}{Dovish\ phrases + Hawkish\ phrases} \quad (2)$$

where *Dovish phrases* and *Hawkish phrases* are the counts of respective phrases in the FOMC statements as well as transcripts when a press conference is held. *TextSentiment* is in the range of [-1;1]. A positive value of *TextSentiment* indicates an expansionary monetary policy or that expansionary monetary policy is expected.

We find (Panel B of Table 1) that the sentiment of texts during the terms of Bernanke and Yellen was generally more dovish than Powell's.<sup>8</sup> This pattern likely reflects that policy rate increases dominated during Powell's period in our sample. The within-speaker variation in the text sentiment is broadly similar across the Fed Chairs. The variation in text sentiment during Q&A sessions is larger than the variation in the text sentiment for statements and remarks, which would be consistent with the less scripted nature of Q&A sessions relative to other communication types. The correlation of sentiment for statement and remarks is discernibly positive ( $\rho = 0.4$ ), while the text sentiment of responses during Q&A sessions is approximately uncorrelated with the text sentiment of statements ( $\rho = 0.06$ ). At the same time, the text sentiments for Q&A and remarks are correlated at  $\rho = 0.32$ . To measure the totality of the sentiment, we compute *TextSentiment* using all three sources (statement, remarks, and Q&A responses). Given that we have a limited number of events in our sample, this approach allows us to save degrees of freedom but our results are robust to using *TextSentiment* measured for each source separately or in other combinations.

### 2.3 Co-movement in Policy Actions and Word

How much do text sentiment and voice tone co-move? Although one might think that text and voice should be highly congruent, Figure 2 demonstrates that the relationship between these two channels of communication is more nuanced. Specifically, the positive messages conveyed in the tonality of voice are associated with more dovish statements in the accompanying texts, but this relationship is fairly weak. For example, the correlation between the text sentiment in statements and the voice tone in the corresponding Q&A sessions is  $\rho = 0.35$ . The correlation for Q&A tone with the text sentiment in remarks or Q&A is even lower: 0.16 and 0.24, respectively. In fact, Figure 2 shows that

---

<sup>8</sup> Text sentiment scores for each meeting are listed in Appendix Table 2.



it is not uncommon to observe dovish texts and negative tonality. These results suggest that the tone of Q&A responses may generate variation in policy communication that is unrelated to what is contained in the texts of policymakers’ statements, remarks, or even Q&A responses themselves.

In a similar spirit, the variation in tone appears to be only weakly correlated with actual policy shocks (panels A-C in Figure 3) identified as in Swanson (2020): a shock to the policy rate (FFR shock), a forward guidance (FG) shock, or an asset purchase (AP) shock. There is a stronger correlation between voice tone and the stage of the policy cycle. Specifically, the correlation between the shadow rate (measured as in Wu and Xia, 2016)<sup>9</sup> and voice tone is -0.29 (for comparison, the correlation with FFR shocks is -0.17), i.e., voice tone becomes more negative as the policy rate increases. We conclude that voice tone has variations unrelated to the Fed’s actions and verbal (text) communication.

### 3 Empirical analysis

In this section, we investigate whether voice tone can move various financial indicators. In particular, we estimate the following specification in the spirit of Jordà (2005):

$$\begin{aligned}
 Outcome_{t,t+h} = & b_0^{(h)} + b_1^{(h)}VoiceTone_t + b_2^{(h)}TextSentiment_t \\
 & + b_3^{(h)}FFRShock_t + b_4^{(h)}FGShock_t + b_5^{(h)}APShock_t \\
 & + b_6^{(h)}ShadowRate_t + error_t^{(h)}
 \end{aligned} \tag{3}$$

where  $t$  dates FOMC meetings.  $VoiceTone_t$  measures voice tone of the Q&A session at date  $t$ .  $TextSentiment_t$  indicates the sentiment in the policy statement, remarks, and Q&A responses.  $FFRShock_t$ ,  $FGShock_t$ , and  $APShock_t$  are policy shocks identified using intraday data by Swanson (2020). These policy shocks are normalized to have unit variance over a “typical” period (e.g., the FFR shock is normalized to have unit variance for the period that excludes zero lower bound).  $ShadowRate_t$  is the shadow policy rate from Wu and Xia (2016). Policy shocks and the shadow rate control for “actions” of the Fed so that we can identify more cleanly the effects of voice

---

<sup>9</sup> The updated series of the shadow rate are available at <https://sites.google.com/view/jingcynthiawu/shadow-rates>.

tone on outcome variables.<sup>10</sup> Note that we code *VoiceTone* equal to zero for FOMC meetings without Q&A sessions. Our results are robust to focusing only on meetings with Q&A sessions.

We estimate specification (3) for each horizon  $h$  ( $h = [0; 15]$ ) separately and plot the estimated coefficients, e.g.,  $\{\hat{b}_2^{(h)}\}_{h=0}^H$ , to illustrate the dynamics of the response to a form of policy action or communication. Note that while high-frequency analyses tend to find clear responses to policy announcements at the intraday frequencies (e.g., Kuttner, 2001, Swanson, 2020), we use the daily frequency which, given dramatic volatility for some financial indicators, often yields statistically insignificant estimates (see, e.g., Gorodnichenko and Weber, 2016). However, one could expect that the response may build over time, consistent with the notion of “slow-moving” capital proposed by Fleckenstein et al. (2014). Using daily series allows us to examine responses at longer horizons, which may be important for identifying policy actions and communication tools with durable effects.

The outcome variables are daily financial indicators available from Thomson Reuters and other popular sources including Yahoo Finance and Tiingo. We generally use prices of exchange-traded funds (ETFs) that track popular indices. For example, we use the SPY, an ETF fund that tracks the S&P 500 index, to measure reactions of the stock market to policy shocks. We measure returns on ETF funds or similar securities as the log close price at date  $t + h$  minus log open price at date  $t$ . Hence, the return on the day of an FOMC meeting is the log difference between close and open prices.

Because the sample is relatively small (67 FOMC meetings), we estimate specification (3) using bootstrap methods to correct for possible biases in the estimates as well as to construct confidence intervals with good coverage. Specifically, 90 percent confidence intervals are based on the 5<sup>th</sup> and 95<sup>th</sup> percentiles of the estimates generated in bootstrap draws. As a robustness check, we also estimate specification (3) with *VoiceTone* as the only regressor.

---

<sup>10</sup> To check the robustness of our findings, we control for releases of macroeconomic data (unemployment rate, non-farm payroll, and GDP growth) in a version of specification (3). While most of the FOMC announcements were not overlapped with the releases of other macro data releases over the examined period, there are few exceptions. In particular, five FOMC announcements were released on the same day as the release of gross domestic product (GDP) data but none of these five were accompanied by a press conference. At the same time, seven FOMC announcements (six of which were followed by a press conference) were made on the same day as consumer price index data releases. We found that controlling for the releases of macroeconomic news does not have a materially important effect on the reported estimates.

### 3.1 *Stock market reactions*

When we use the SPY ETF to measure the reactions of the stock market to policy actions and communications, we find (Panel B of Figure 4) that a more positive voice tone leads to an increase in share prices. Specifically, the impact response (i.e.,  $h = 0$ ) of the stock market is weak and not significant statistically. Over time, the response builds up and after five days, the return on SPY reaches approximately 100 basis points for a unit increase in voice tone. The response levels off after the first few days and stays statistically significant at 10 percent. We observe this pattern irrespective of whether we include controls (Panel B) or not (Panel A) in specification (3).

The sentiment of the policy texts does not appear to have a statistically discernible effect on the SPY in our sample, although the point estimates are positive, suggesting that more dovish sentiment leads to a boom in the stock market. This finding is qualitatively in line with the results documented in the literature. For example, employing the high-frequency event study approach, Rosa (2011b) shows that surprise hawkish FOMC statements lead to a reduction in equity returns. However, using monthly data over the 1998 – 2014 period, Hansen and McMahon (2016) find a statistically insignificant reaction of stock markets to FOMC statements talking more about strong economic conditions.

The FFR shock does not have a statistically significant effect on the stock market, which likely reflects the fact that the sample period is dominated by the zero lower bound and changes in the short-term policy rate probably provided a rather limited outlook for the stance of monetary policy. Changes in the pace of asset purchases by the central bank (AP shock) also do not have a clear effect on the stock market, a finding consistent with Swanson (2020). Note that our sample does not include the first round of quantitative easing in 2009, which led to a strong reaction of the stock market (see, e.g., Chodorow-Reich, 2004, Krishnamurthy and Vissing-Jorgensen, 2011). For this sample period, however, a forward guidance shock leads to a persistent decrease in stock prices, in line with the intra-day responses estimated by Swanson (2020). This response is consistent with the signaling effect suggested by Campbell et al. (2012): an FG shock reveals that the Fed could be pessimistic about the state of the economy. The magnitude of the stock market response to a unit decrease in voice tone is approximately equal to the response we observe after

a one-standard-deviation forward-guidance shock. Thus, the variation in voice tone has economically significant effects.

To further understand the reaction of the stock market to policy actions and messages, we examine the response of the CBOE Volatility Index VIX (Figure 5), a popular measure of the stock market's expectations about future volatility. We also study the responses of futures on the VIX to have a more refined sense of how policy can influence outlook for volatility. Specifically, we use VIXY (Figure 6; VIX Short-Term Futures) and VIXM (Appendix Figure 7; VIX Mid-Term Futures ETF) ETFs. We find that Fed actions (FFR/FG/AP shocks) tend to raise the volatility in the stock market. The sentiment in the texts does not lead to an apparent response in the volatility indices. In contrast, a positive voice tone tends to decrease current and anticipated volatility. This result is consistent with the notion that central banks can shape uncertainty about future economic conditions (Hansen et al., 2019). The variation in voice tone has economically significant effects: a unit decrease in the tone increases the volatility by an amount that is roughly equal to the increase after a one-standard-deviation shock to forward guidance.

Relatedly, monetary policy can convey information about the path of interest rates and thus reduce the interest rate risk (Hattori et al., 2016). To quantify the importance of this channel, we

measure the interest rate risk with the following spread:  $Outcome_{t,t+h} = \log \left( \frac{P_{t+h,close}^{LQD}}{P_{t,open}^{LQD}} \right) -$

$\log \left( \frac{P_{t+h,close}^{LQDH}}{P_{t,open}^{LQDH}} \right)$ , where  $P^{LQD}$  is the price of LQD ETF (investment grade corporate bonds) and

$P^{LQHD}$  is the price of interest rate hedged corporate bond LQDH ETF. A decrease in this measure indicates a decline in the perceived interest rate risk. Our results (Figure 7) suggest that a more positive tone leads to a reduction in investors' expectations about interest rate risk. Consistent with this interpretation and in line with the existing studies, which document the impact of policy actions on bond risk premia (e.g., Hattori et al., 2016), we find that a forward guidance shock reduces uncertainty about the future path of interest rate. A unit decrease in voice tone and a one-standard-deviation increase in the FG shock generate similar responses of the spread, again pointing to the economic significance of the tone of voice. In contrast, an AP shock could signal the lower amount of interest rate risk in investor portfolios in the future, and thus, increase the perceived current interest rate risk, which is consistent with the analysis in Gorodnichenko and

Ray (2017). Intuitively, asset purchases are a form of discretionary policy and the deployment of such a tool increases uncertainty about the future path of policy.

### 3.2 *Bond market reactions*

Kuttner (2001), Swanson (2020), and many others document a strong reaction of the bond market to monetary policy shocks. Consistent with these earlier works, we find (Figure 8) that the price of GOVT ETF (a fund covering U.S. government nominal debt) decreases in response to a forward guidance shock (i.e., yields rise) and increases in response to an asset-purchase shock (i.e., yields fall). FFR shocks do not lead to a statistically significant response in GOVT prices, which likely reflects the prominence of the zero lower bound in our sample. In contrast to the strong responses of the stock market, responses of the bond market to voice tone are not statistically significant. Similarly, text sentiment does not move GOVT prices materially. These findings are consistent with Cieslak and Pang (2020) or Ehrmann and Talmi (2020), who document that the bond market reaction to Fed communications is weak. Using ETFs for government debt with different maturities, we also examine if there could be a differential response across the maturity space. We find qualitatively similar responses for all maturities (Appendix Figure 1 through Appendix Figure 6) although the magnitudes of the responses to FFR/FG/AP shocks tend to be smaller for shorter maturities.

An important dimension of monetary policy transmission is how policy can influence the interest rates faced by the corporate sector. While the bond market is highly integrated, the pass-through from U.S. government debt to corporate debt may be limited and nuanced. As a first stab at this question, we use the LQD ETF (a fund covering investment grade corporate bonds) and find (Figure 9) that policy actions (FFR/FG/AP shocks) tend to move yields in the same direction as they move yields for U.S. government debt. Text sentiment does not have a statistically significant effect on LQD prices. A positive voice tone appears to elevate LQD prices (i.e., yields fall) for a few days after an FOMC meeting, but this effect is short-lived and statistically insignificant. The results are broadly similar when we use the IVR ETF (real estate investment trust; Figure 10) to gauge the responses of the real estate sector, although a more dovish text sentiment appears to raise the IVR price after about a week.

### 3.3 Inflation Expectations

Management of inflation expectations is a key element of monetary policy (see Coibion et al., 2020 for a survey). To evaluate the success of policymakers in this matter we use two popular metrics. The first one is the spread between nominal and inflation-protected U.S. Government bonds. Specifically, we use  $Outcome_{t,t+h} = \log \left( \frac{P_{t+h,close}^{GOVT}}{P_{t,open}^{GOVT}} \right) - \log \left( \frac{P_{t+h,close}^{TIP}}{P_{t,open}^{TIP}} \right)$  as a measure of the spread, where  $P^{GOVT}$  is the price of GOVT ETF (nominal bonds) and  $P^{TIP}$  is the price of TIP ETF (inflation-protected bonds). An increase in this spread can be interpreted as signalling a decrease in expected inflation. The second one used is the GLD ETF, a fund that tracks the gold spot price. This ETF is used as a hedge against inflation: an increase in the price of GLD signals higher expected inflation. Although neither of these measures is perfect (e.g., the spread varies not only due to changes in inflation expectations but also with changes in liquidity conditions; gold prices can move for reasons unrelated to inflation), these two measures are consistently available and are based on reasonably deep markets.

We find that the responses of the GOVT-TIP spread (Figure 11) and GLD (Figure 12) paint a similar picture. As before, the FFR shock does not have a clear impact. The FG shock lowers inflation expectations, while the AP shock raises inflation expectations. More dovish text sentiment appears to raise inflation expectations (the GLD price increases), but this response is not statistically significant. Moreover, it does not seem to have support from the GOVT-TIP spread, which appears to decrease (i.e., expected inflation is lower), although again the estimates are not statistically significant. The impact response of the GOVT-TIP spread to a positive tone of voice is close to zero, but the spread gradually increases (thus, signaling lower expected inflation) and peaks after about 10 days. The GLD price has similar dynamics (i.e., lower expected inflation) but the estimates are less precise. Hence, voice tone seems to have an independent effect on inflation expectations. One may conjecture that positive tone plays a signaling role: a happy tone of the Fed Chair indicates satisfaction with future inflation dynamics.

### 3.4 Exchange Rate

The exchange rate is an important channel for monetary policy transmission in the increasingly globalized economy. To shed more light on how policy actions and communication can work via

this channel, we examine the responses of two key exchange rates: yen/dollar (JPY; Figure 13) and euro/dollar (EURO; Figure 14).<sup>11</sup> We find that policy actions generally lead to mixed reactions across currencies in our sample. For example, after an FFR shock (monetary tightening), the dollar depreciates against the euro (although the effect is not statistically significant) and appreciates against the yen.<sup>12</sup> In a similar spirit, after a more dovish text sentiment (opposite to monetary tightening), the dollar appreciates against the euro and depreciates against the yen. In contrast, a more positive tone of voice leads to appreciation of the dollar against the euro, but there is no statistically significant response for the yen/dollar exchange rate. While somewhat unexpected, the relatively lower level of reaction of the yen/dollar exchange rate to the monetary policy shocks has also been observed in other studies (e.g., Fatum and Scholnick, 2008, Rosa, 2011a).

### 3.5 Discussion

In general, our findings shed new light on the effectiveness of press conferences as a central bank communication tool. We show that just as the actions of the Fed move financial markets, so too does the vocal aspect of FOMC press conferences. The vocal dimension of the central bank communication conveys information beyond that in the text, and market participants form their expectations and make their decisions based on that information.

Why does non-verbal communication matter? One explanation is that due to asymmetric information between the public and the central bank, market participants tend to look for more information through the aspects which are not explicitly “scripted”, such as the tone of voice or body language of the Fed Chair. These non-verbal elements of communication can signal the Fed’s perspective on current/future economic outlook and/or the future course of monetary policy. In fact, it is not uncommon that investors and the media watch/listen to the FOMC press conference, analyze the Chair’s voice, and attempt to interpret what it (i.e., the voice tone/emotion) implies. In other words, the press and financial market investors appear to pay attention to non-verbal communication.<sup>13</sup> For example, the Wall Street Journal<sup>14</sup> reported Ben Bernanke’s voice as either

---

<sup>11</sup> We also report results for the pound/dollar (GBP) exchange rate in Appendix Figure 8.

<sup>12</sup> Analyses using intraday data (e.g., Swanson, 2020) find that the dollar appreciates against the euro and yen after a FFR shock.

<sup>13</sup> See, e.g., <https://cutt.ly/FzbnCBo>; <https://cutt.ly/fzbn1le> (Accessed on 10 March 2021)

<sup>14</sup> <https://cutt.ly/3zbnQbe> (Accessed on 10 March 2021)

shaky or quavering during the first FOMC press conference on 27 April 2011. In a similar spirit, the tone of Jerome Powell’s voice at the press conference on 16 September 2020 was perceived to be consistent with previous press conferences, which was interpreted as a signal of downplaying his dovish position.<sup>15</sup>

#### **4 Concluding remarks**

Press conferences are an important communication tool for delivering and explaining monetary policy decisions to the public. Unlike press releases, transcripts, or minutes, a press conference contains both verbal and non-verbal channels. The latter offers an opportunity to communicate “soft” information. Machine learning applied to text analysis allowed researchers to better measure messages in written policy documents and thus quantify the importance of soft information. Other parts of communication (emotions, moods, tones, body language) could be equally (if not more) important but these have proven to be particularly difficult to quantify. Building on recent advances in voice recognition and deep learning, we attempt to shed new light on the effects of non-verbal policy communication.

Our analysis of variation in the Fed Chairs’ voice tone during Q&A sessions after FOMC meetings shows that non-verbal communication can have a statistically and economically discernible effect on a variety of financial indicators. For example, our results suggest that the voice tone of policy communication may have a significant effect on the stock market above and beyond what is contained in the Fed’s actions or actual words (texts). This reaction is consistent with the Fed communicating a more positive outlook for the economy and reducing uncertainty. Inflation expectations and exchange rates also respond to voice tone. In contrast, the bond market appears to take few vocal cues from the Fed Chairs.

Although future work should dig deeper into understanding nuances of using voice to communicate policy, our results clearly have important policy implications. *How* messages are said appears to be potentially as important as what is in the messages. This does not make the job of central bankers easier and possibly adds another qualification (voice control) to the job requirement.

---

<sup>15</sup> <https://cutt.ly/RzbnAm5> (Accessed on 10 March 2021)



However, this could be a prerequisite for anybody interested in using a public arena for policy communication. Indeed, to paraphrase Ronald Reagan, how can a Fed Chair not be an actor?

## References

- Andersson, K., 2020. "Speech Emotion Recognition in Neurological Disorders Using Convolutional Neural Network." In *Brain Informatics: 13th International Conference Proceedings* 12241: 287. Italy: Springer, 12241, p. 287.
- Apel, M. and Grimaldi, M., 2014. "How Informative Are Central Bank Minutes?" *Review of Economics* 65(1):53-76.
- Bhavan, A., Chauhan, P., and Shah, R.R., 2019. "Bagged Support Vector Machines for Emotion Recognition from Speech." *Knowledge-Based Systems* 184:104886.
- Blinder, A.S., Ehrmann, M., Fratzscher, M., De Haan, J., and Jansen, D.J., 2008. "Central Bank Communication and Monetary Policy: A Survey of Theory and Evidence." *Journal of Economic Literature* 46(4): 910-45.
- Caffi, C. and Janney, R.W., 1994. "Toward a Pragmatics of Emotive Communication." *Journal of Pragmatics* 22(3-4): 325-373.
- Campbell, J., Evans, C., Fisher, J., and Justiniano, A., 2012. "Macroeconomic Effects of Federal Reserve Forward Guidance." *Brookings Papers on Economic Activity*: 1-80.
- Chodorow-Reich, G., 2014. "Effects of Unconventional Monetary Policy on Financial Institutions." *Brookings Papers on Economic Activity*:155-227.
- Choudhury, A.R., Ghosh, A., Pandey, R., and Barman, S., 2018. "Emotion Recognition from Speech Signals using Excitation Source and Spectral Features." In *2018 IEEE Applied Signal Processing Conference*. IEEE, pp. 257-261.
- Cieslak, A. and Pang, H., 2020. "Common Shocks in Stocks and Bonds." National Bureau of Economic Research Working Paper No. w28184.
- Cieslak, A. and Vissing-Jorgensen, A., 2020. "The Economics of the Fed Put." *The Review of Financial Studies*. In Press.
- Cieslak, A., Morse, A. and Vissing-Jorgensen, A., 2019. "Stock Returns over the FOMC Cycle." *The Journal of Finance* 74(5): 2201-2248.

- Coenen, G., Ehrmann, M., Gabor, G., Hoffmann, P., Nakov, A., Nardelli, S., Persson, E., and Strasser, G., 2017. "Communication of Monetary Policy in Unconventional Times," European Central Bank Working Paper Series 2080.
- Coibion, O., Gorodnichenko, Y., and Weber, M., 2019. "Monetary Policy Communications and Their Effects on Household Inflation Expectations." National Bureau of Economic Research Working Paper No. w25482.
- Coibion, O., Gorodnichenko, Y., Kumar, S., and Pedemonte, M., 2020. "Inflation Expectations as a Policy Tool?" *Journal of International Economics* 124(C): 103297.
- Dricu, M., Ceravolo, L., Grandjean, D., and Frühholz, S., 2017. "Biased and Unbiased Perceptual Decision-making on Vocal Emotions." *Scientific Reports* 7(1):1-16.
- Ehrmann, M. and Fratzscher, M., 2007. "The Timing of Central Bank Communication." *European Journal of Political Economy* 23(1):124-145.
- Ehrmann, M. and Talmi, J., 2020. "Starting from a Blank Page? Semantic Similarity in Central Bank Communication and Market Volatility." *Journal of Monetary Economics* 111: 48-62.
- Enders, Z., Hünnekes, F., and Müller, G.J., 2019. "Monetary Policy Announcements and Expectations: Evidence from German Firms." *Journal of Monetary Economics* 108: 45-63.
- Fatum, R. and Scholnick, B., 2008. "Monetary Policy News and Exchange Rate Responses: Do Only Surprises Matter?" *Journal of Banking & Finance* 32(6):1076-1086.
- Fleckenstein, M., F. Longstaff, and H. Lustig, 2014. "The TIPS-Treasury Bond Puzzle." *The Journal of Finance* 69(5): 2151-2197.
- Gao, Y., Li, B., Wang, N. and Zhu, T., 2017. "Speech Emotion Recognition using Local and Global Features." In *International Conference on Brain Informatics*. Springer, pp. 3-13.
- Gorodnichenko, Y. and Weber, M., 2016. "Are Sticky Prices Costly? Evidence from the Stock Market." *American Economic Review* 106(1): 165-199.
- Gorodnichenko, Y. and Ray, W., 2017. "The Effects of Quantitative Easing: Taking a Cue from Treasury Auctions." NBER Working Papers 24122 (updated February 2021).

- Gürkaynak, G., Sack, B., and Swanson, E., 2005. "Do Actions Speak Louder Than Words? The Response of Asset Prices to Monetary Policy Actions and Statements." *International Journal of Central Banking* 1(1): 55-93.
- Hansen, S., and McMahon, M., 2016. "Shocking Language: Understanding the Macroeconomic Effects of Central Bank Communication." *Journal of International Economics* 99: S114-S133.
- Hansen, S., McMahon, M., and Prat, A., 2018. "Transparency and Deliberation Within the FOMC: A Computational Linguistics Approach." *The Quarterly Journal of Economics* 133(2): 801-870.
- Hansen, S., McMahon, M., and Tong, M., 2019. "The Long-run Information Effect of Central Bank Communication," *Journal of Monetary Economics* 108(C): 185-202.
- Hattori, M., Schrimpf, A., and Sushko, V., 2016. "The Response of Tail Risk Perceptions to Unconventional Monetary Policy." *American Economic Journal: Macroeconomics* 8(2): 111-36.
- Hobson, J.L., Mayew, W.J., and Venkatachalam, M., 2012. "Analyzing Speech to Detect Financial Misreporting." *Journal of Accounting Research* 50(2): 349-392.
- Hu, A. and Ma, S., 2020. "Human Interactions and Financial Investment: A Video-Based Approach." Working Paper.
- Jordà, Ò., 2005. "Estimation and Inference of Impulse Responses by Local Projections." *American Economic Review* 95(1):161-182.
- Krishnamurthy, A. and Vissing-Jorgensen, A., 2011. "The Effects of Quantitative Easing on Interest Rates: Channels and Implications for Policy." *Brookings Papers on Economic Activity* 42(2 (Fall)): 215-287.
- Kuttner, K., 2001. "Monetary Policy Surprises and Interest Rates: Evidence from the Fed Funds Futures Market." *Journal of Monetary Economics* 47(3): 523-544.
- Lamla, M.J. and Vinogradov, D.V., 2019. "Central Bank Announcements: Big News for Little People?" *Journal of Monetary Economics* 108: 21-38.

- Likitha, M.S., Gupta, S.R.R., Hasitha, K., and Raju, A.U., 2017. "Speech based Human Emotion Recognition using MFCC." In *2017 International Conference on Wireless Communications, Signal Processing and Networking*. IEEE, pp. 2257-2260.
- Mayew, W.J. and Venkatachalam, M., 2012. "The power of voice: Managerial affective states and future firm performance." *The Journal of Finance* 67(1): 1-43.
- Mehrabian, A., 1971. *Silent Messages: Implicit Communication of Emotions and Attitudes*. Belmont, CA: Wadsworth, p.30.
- Neuhierl, A. and Weber, M., 2019. "Monetary policy communication, policy slope, and the stock market." *Journal of Monetary Economics* 108(C): 140-155.
- Pan, Y., P. Shen, and L. Shen, 2012. "Speech emotion recognition using support vector machine." *International Journal of Smart Home* 6(2):101-108.
- Rosa, C., 2011a. "The high-frequency response of exchange rates to monetary policy actions and statements." *Journal of Banking & Finance* 35(2): 478-489.
- Rosa, C., 2011b. "Words that shake traders: The stock market's reaction to central bank communication in real time." *Journal of Empirical Finance* 18(5): 915-934.
- Rozkrut, M., Rybiński, K., Sztaba, L., and Szwaja, R., 2007. "Quest for central bank communication: Does it pay to be "talkative"?" *European Journal of Political Economy* 23(1): 176-206.
- Swanson, E.T., 2020. "Measuring the Effects of Federal Reserve Forward Guidance and Asset Purchases on Financial Markets." *Journal of Monetary Economics*. In Press.
- Verma, D. and Mukhopadhyay, D., 2016. "Age driven automatic speech emotion recognition system." In *2016 International Conference on Computing, Communication and Automation*. IEEE, pp.1005-1010.
- Visschedijk, G.C., Lazonder, A.W., van der Hulst, A., Vink, N., and Leemkuil, H., 2013. "Modelling human emotions for tactical decision-making games." *British Journal of Educational Technology* 44(2): 197-207.
- Wu, J.C. and Xia, F.D., 2016. "Measuring the Macroeconomic Impact of Monetary Policy at the Zero Lower Bound." *Journal of Money, Credit and Banking* 48(2-3): 253-291.

Table 1. FOMC meetings' statistics

	All	Bernanke	Yellen	Powell
	(1)	(2)	(3)	(4)
Meetings	67	25	31	11
Press conference	36	12	16	8
<b>Panel A. Voice analysis of responses in Q&amp;A during press conferences</b>				
Answers (count)				
Positive	377	200	109	68
Negative	285	43	131	111
Neutral	30	0	28	2
Voice tone				
mean	0.09	0.64	-0.13	-0.30
standard deviation	0.75	0.58	0.61	0.82
<b>Panel B. Textual analysis</b>				
Statement				
Hawkish	182	76	79	27
Dovish	195	81	96	18
Text sentiment				
mean	-0.01	0.04	0.07	-0.23
standard deviation	0.21	0.11	0.17	0.23
Remarks				
Hawkish	335	108	156	71
Dovish	391	139	179	73
Text sentiment				
mean	0.07	0.11	0.06	0.02
standard deviation	0.19	0.22	0.17	0.17
Q&A				
Hawkish	442	155	203	84
Dovish	551	196	250	105
Text sentiment				
mean	0.13	0.12	0.12	0.16
standard deviation	0.26	0.29	0.23	0.32
Statement, Remarks, Q&A				
Text sentiment				
mean	0.09	0.12	0.09	0.06
standard deviation	0.16	0.17	0.15	0.20

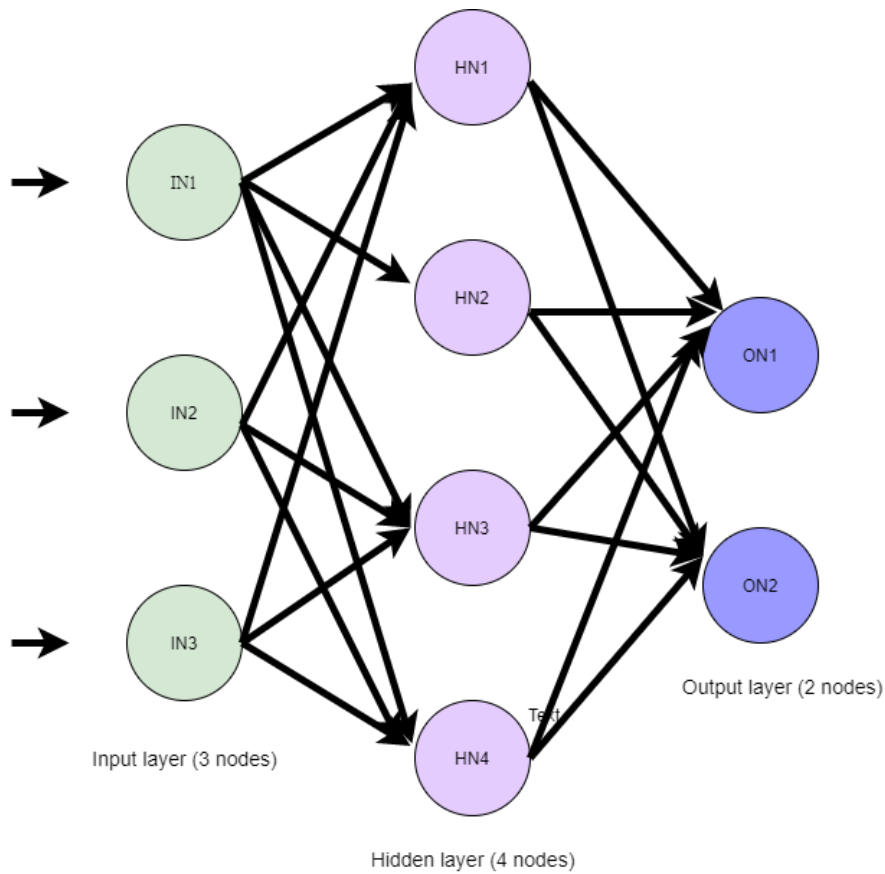
Notes: This table shows the statistics related to text and voice data of FOMC meetings and press conferences. Column (1) shows statistics for all FOMC meetings during the 2011 – July 2019 period. Columns (2)-(4) show the statistics for the FOMC meetings chaired by Ben Bernanke, Janet Yellen, and Jerome Powell, respectively. Positive, Negative, and Neutral indicate the number of answers expressed in the positive, negative, and neutral emotion, respectively. Voice tone is the average emotion for a given FOMC press conference ( $VoiceTone = \frac{Positive\ answers - Negative\ answers}{Positive\ answers + Negative\ answers}$ ). Hawkish and Dovish are the number of hawkish and dovish phrases in the text, respectively. The average text sentiment is measured by  $TextSentiment = \frac{Dovish\ phrases - Hawkish\ phrases}{Dovish\ phrases + Hawkish\ phrases}$ .

*Table 2. Dictionary for hawkish and dovish words.*

Panel A1	Panel A2
inflation expectation, interest rate, bank rate, fund rate, price, economic activity, inflation, employment	anchor, cut, subdue, declin, decrease, reduc, low, drop, fall, fell, decelarat, slow, pause, pausing, stable, non-accelerating, downward, tighten
Panel B1	Panel B2
unemployment, growth, exchange rate, productivity, deficit, demand, job market, monetary policy	ease, easing, rise, rising, increase, expand, improv, strong, upward, raise, high, rapid
Panel C	
weren't, were not, wasn't, was not, did not, didn't, do not, don't, will not, won't	

Notes: This table shows the words/phrases used to classify text into dovish/hawkish.

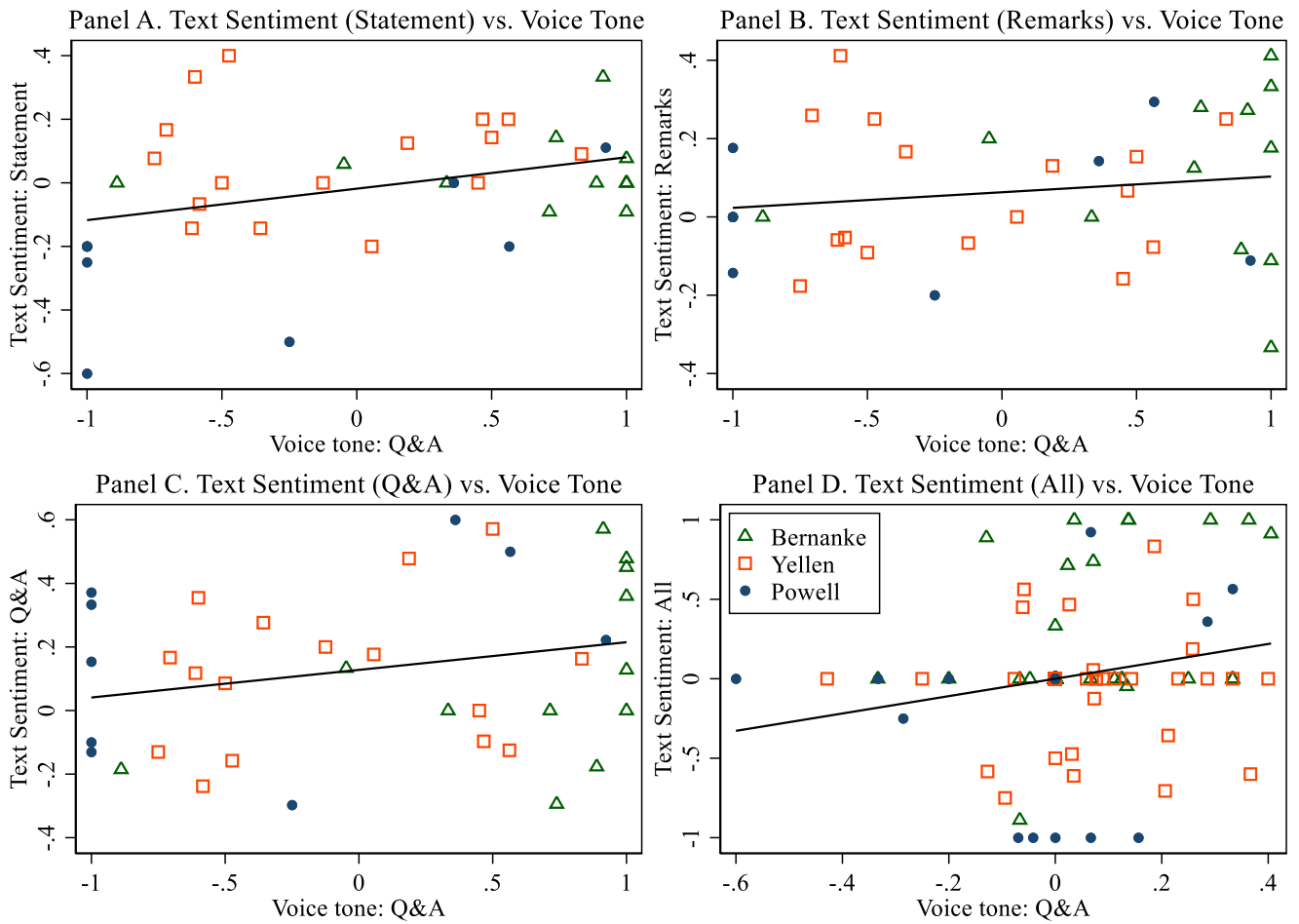
Figure 1. Conceptual neural network



Notes: This figure shows a conceptual neural network with 3 layers for classifying voice features into emotions. The left layer is the input layer with three nodes and each node is a feature of the training audio data. The middle layer is a hidden layer consisting of four nodes ( $HN_k$ ,  $k=[1;4]$ ) which are the activation functions of the input features  $IN_i$  ( $i=[1;3]$ ). A node  $HN_k$  is connected with the input the through weight ( $w_{k,i}$ ) and bias ( $b_k$ ):  $\sum_{i=1}^3 IN_i \times w_{k,i} + b_k$ . The weighted summations are passed on the softmax activation function to obtain the outputs  $O_k$  ( $k=[1;4]$ ). The right layer is the output layer.

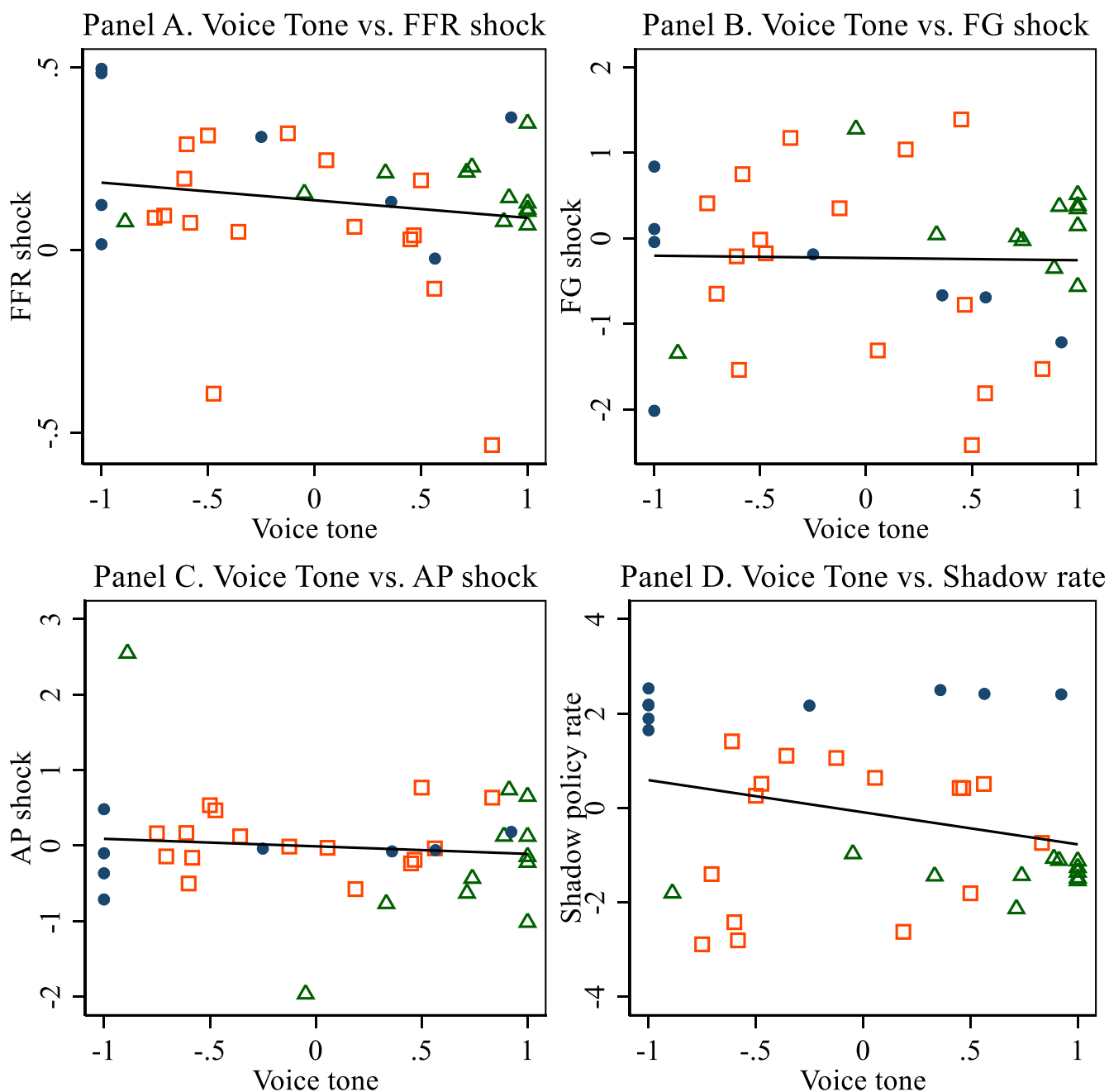


Figure 2. Voice tone vs. Text sentiment.



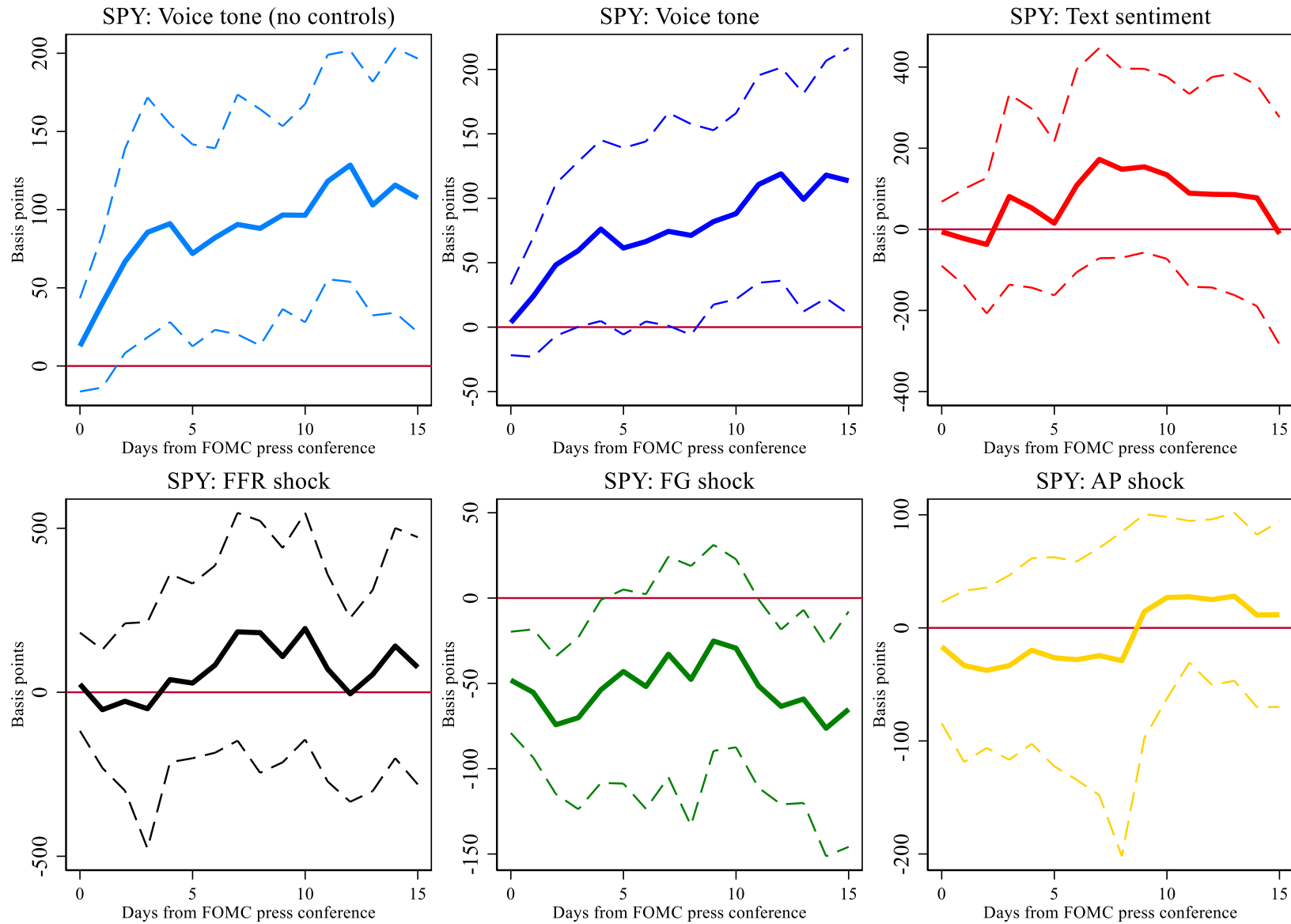
Notes: The figure shows the joint distribution of voice tone and text sentiment across FOMC meetings.

Figure 3. Policy Words vs. Actions.



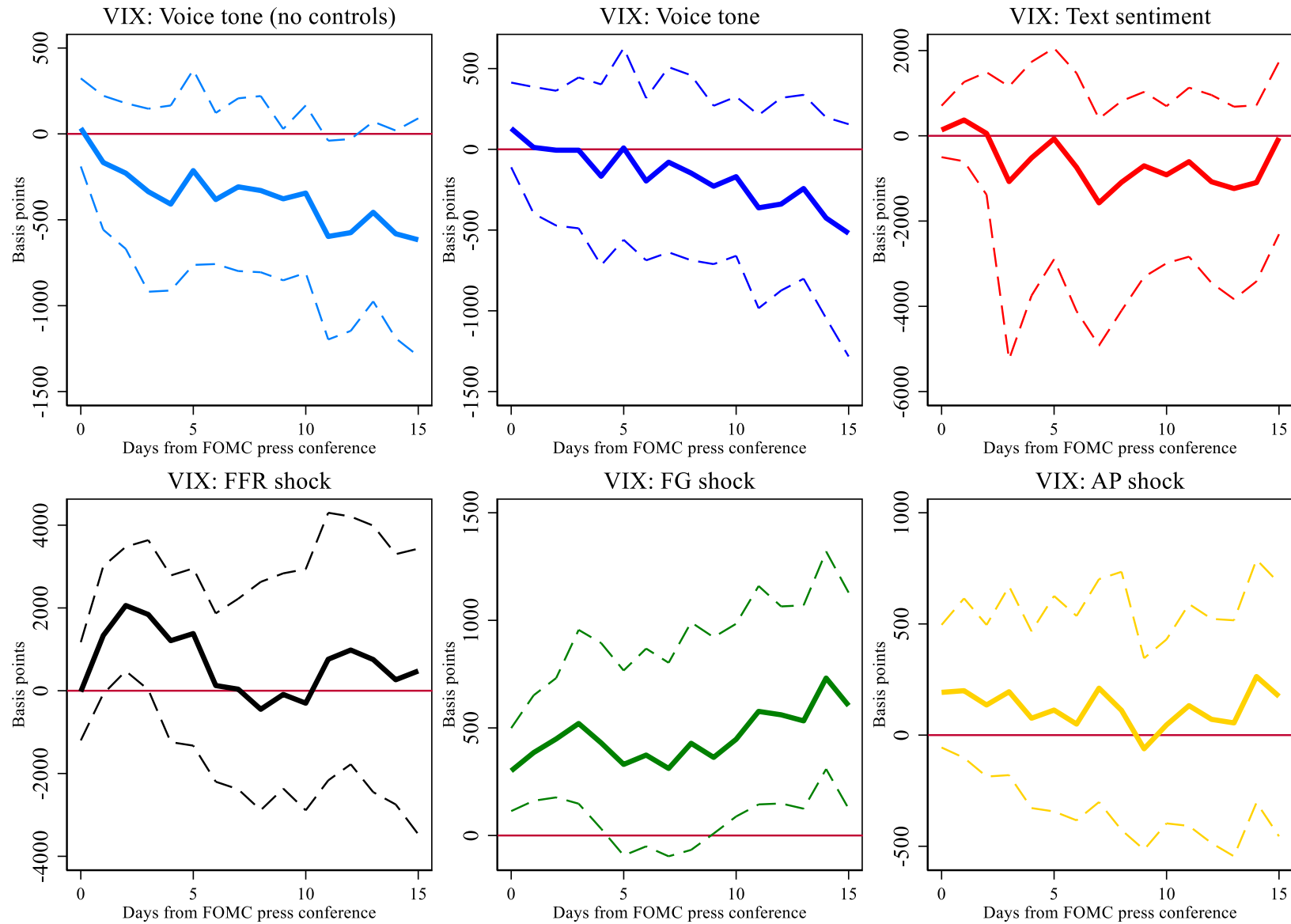
Notes: The figure shows the joint distribution of voice tone and policy actions/stance. Federal Funds Rate (FFR), forward guidance (FG), and asset purchase (AP) shocks are from Swanson (2020). The shadow policy rate is from Wu and Xia (2016).

Figure 4. Response of SPY ETF (S&P 500) to policy actions and messages.



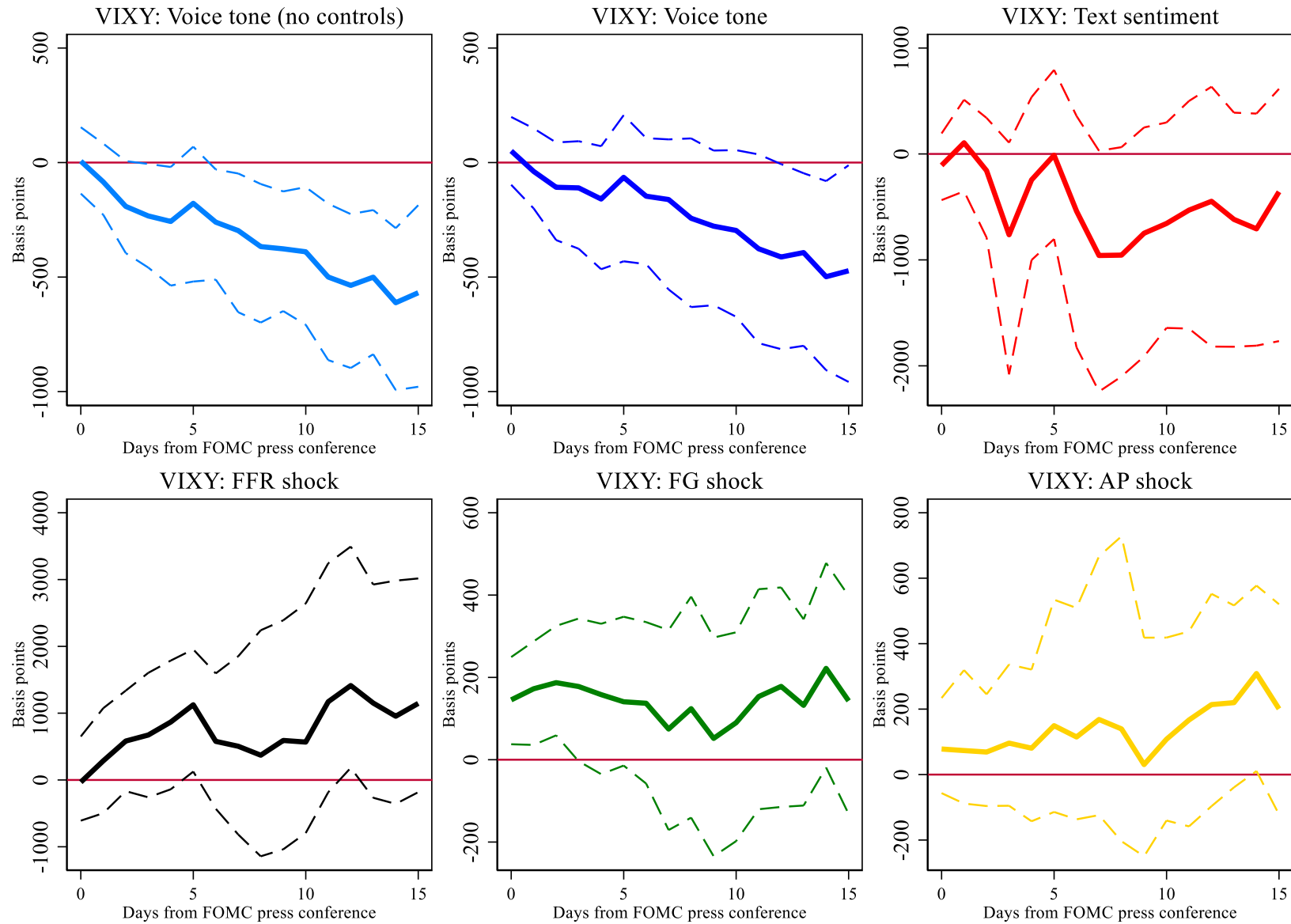
Notes: the figure reports estimated slope coefficients  $b$  (Specification (3)) for policy communication/actions. Dashed lines show 90% bootstrap confidence intervals.

Figure 5. Response of VIX (CBOE Volatility Index) to policy actions and messages.



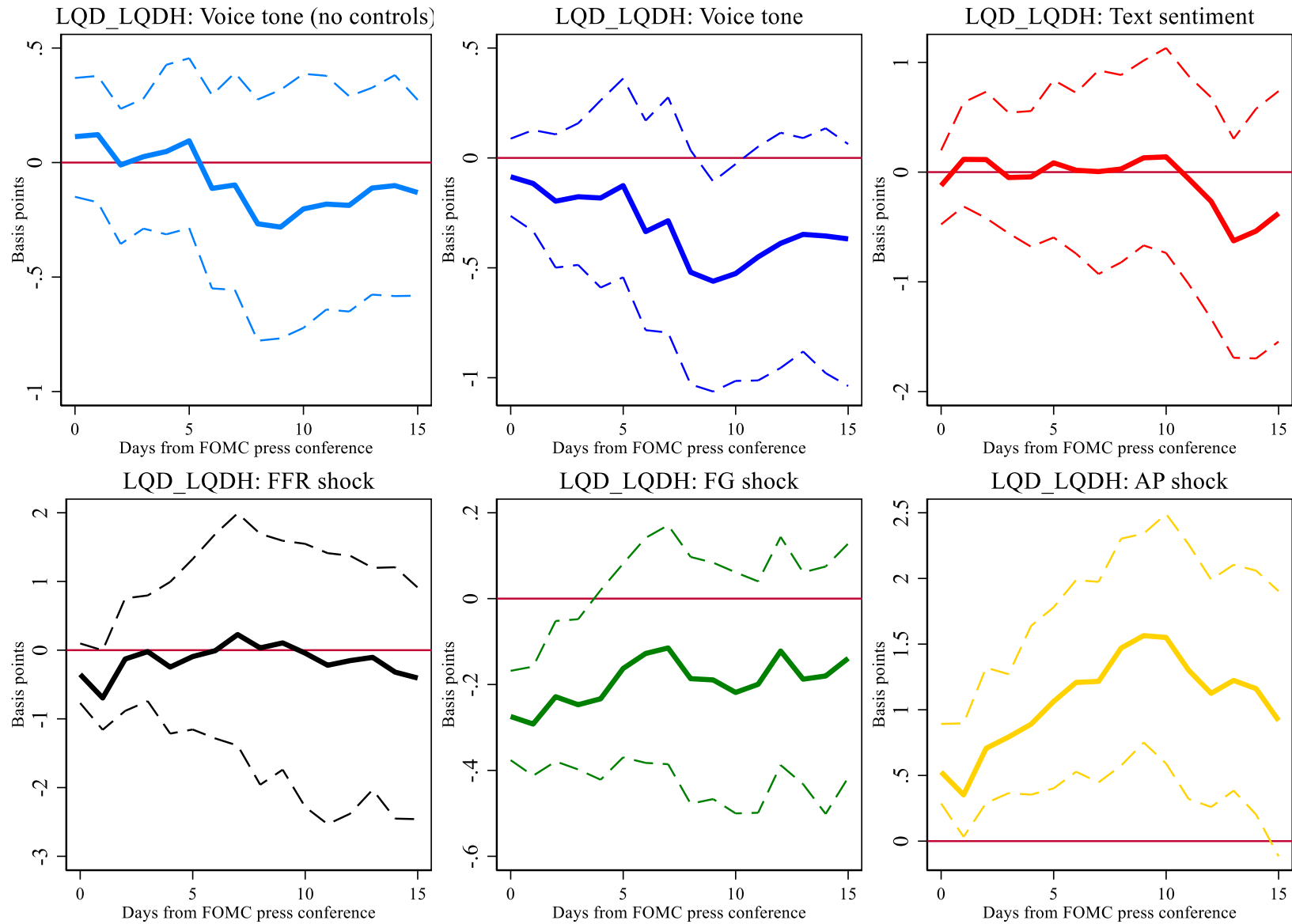
Notes: the figure reports estimated slope coefficients  $b$  (Specification (3)) for policy communication/actions. Dashed lines show 90% bootstrap confidence intervals.

Figure 6. Response of VIXY ETF (VIX Short-Term Futures) to policy actions and messages.



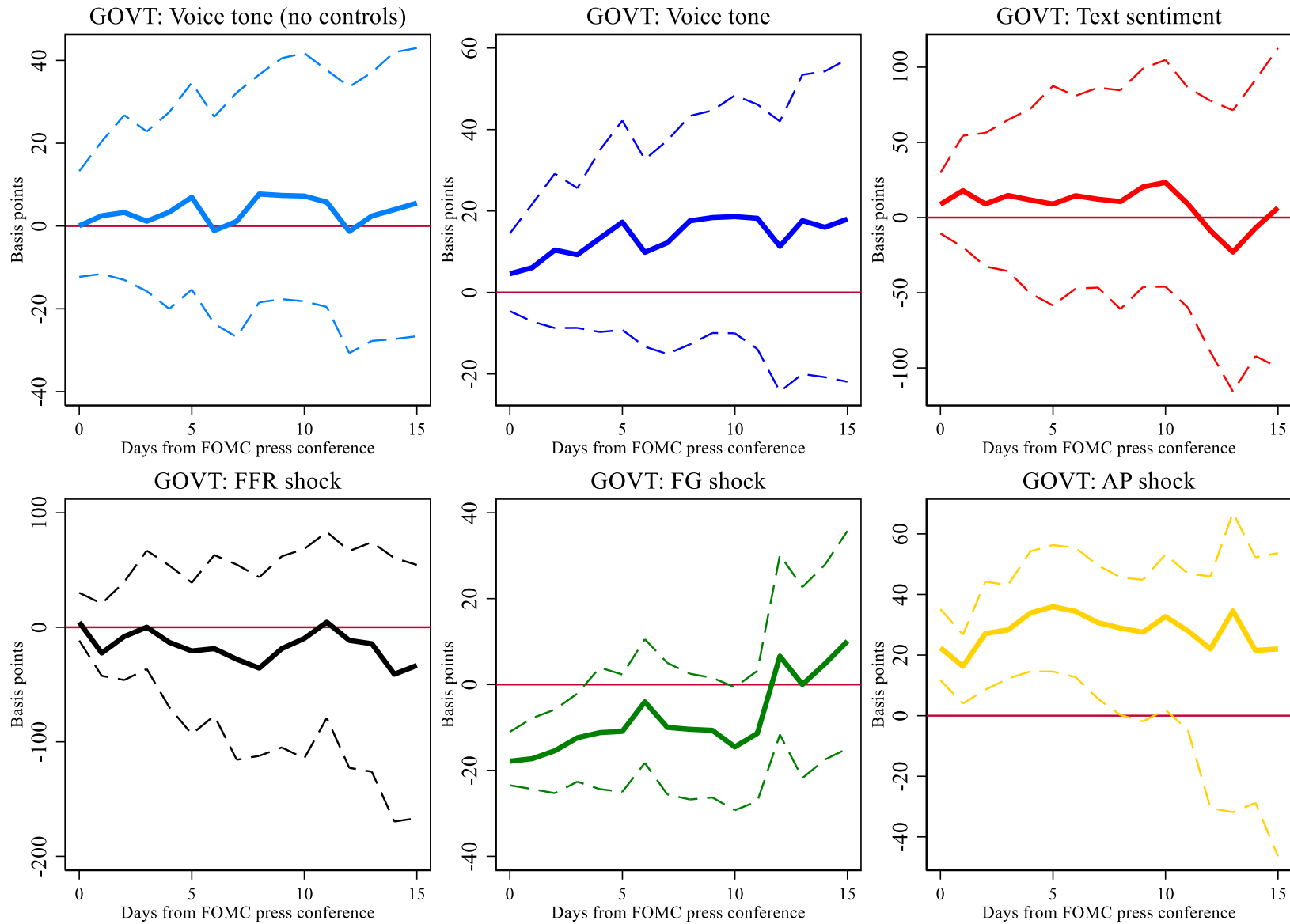
Notes: the figure reports estimated slope coefficients  $b$  (Specification (3)) for policy communication/actions. Dashed lines show 90% bootstrap confidence intervals.

Figure 7. Response of LQD ETF (investment grade corporate bond) minus LQDH EFT (interest rate hedged corporate bond) to policy actions and messages.



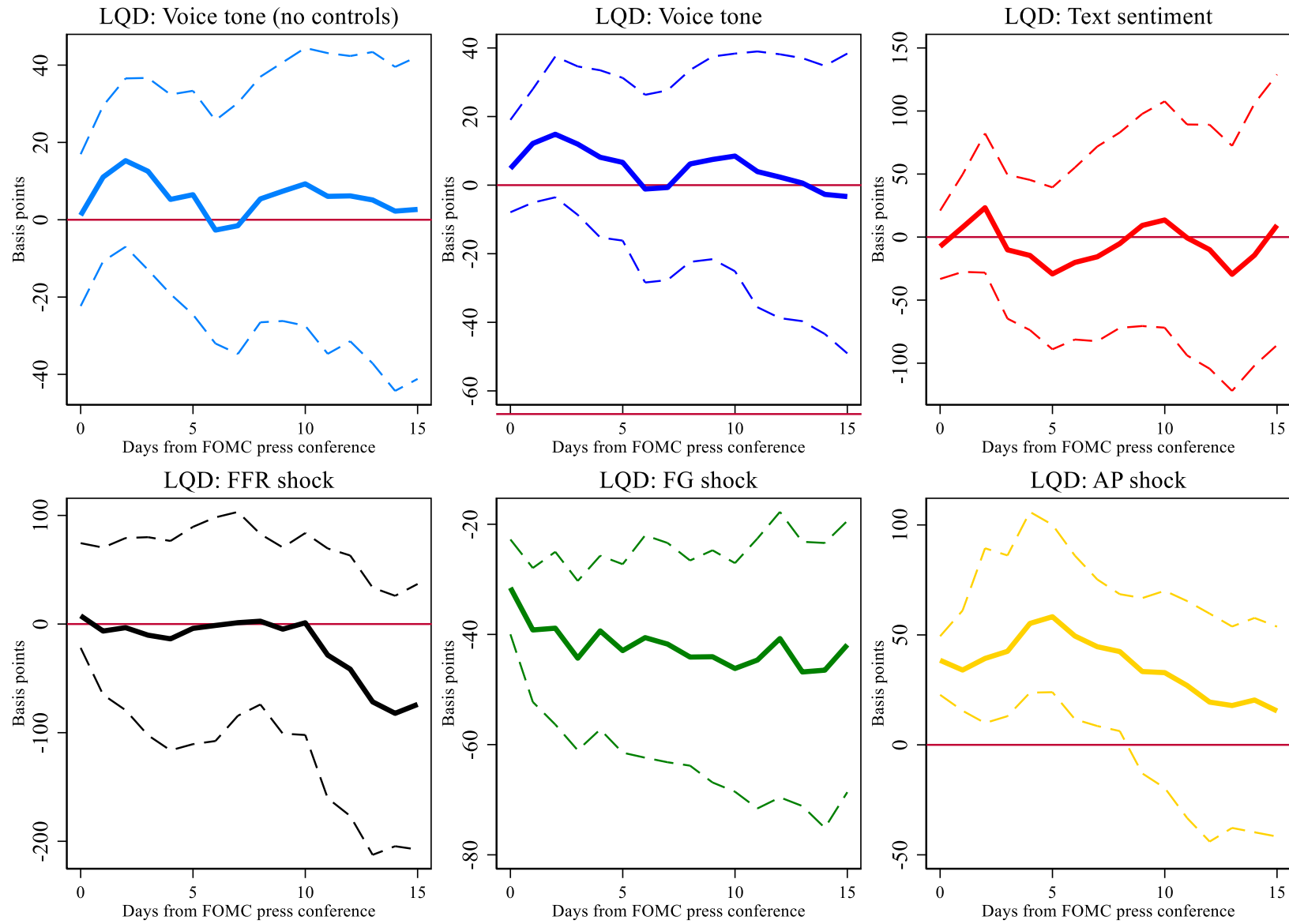
Notes: the figure reports estimated slope coefficients  $b$  (Specification (3)) for policy communication/actions. Dashed lines show 90% bootstrap confidence intervals.

Figure 8. Response of GOVT ETF (U.S. government debt) to policy actions and messages.



Notes: the figure reports estimated slope coefficients  $b$  (Specification (3)) for policy communication/actions. Dashed lines show 90% bootstrap confidence intervals.

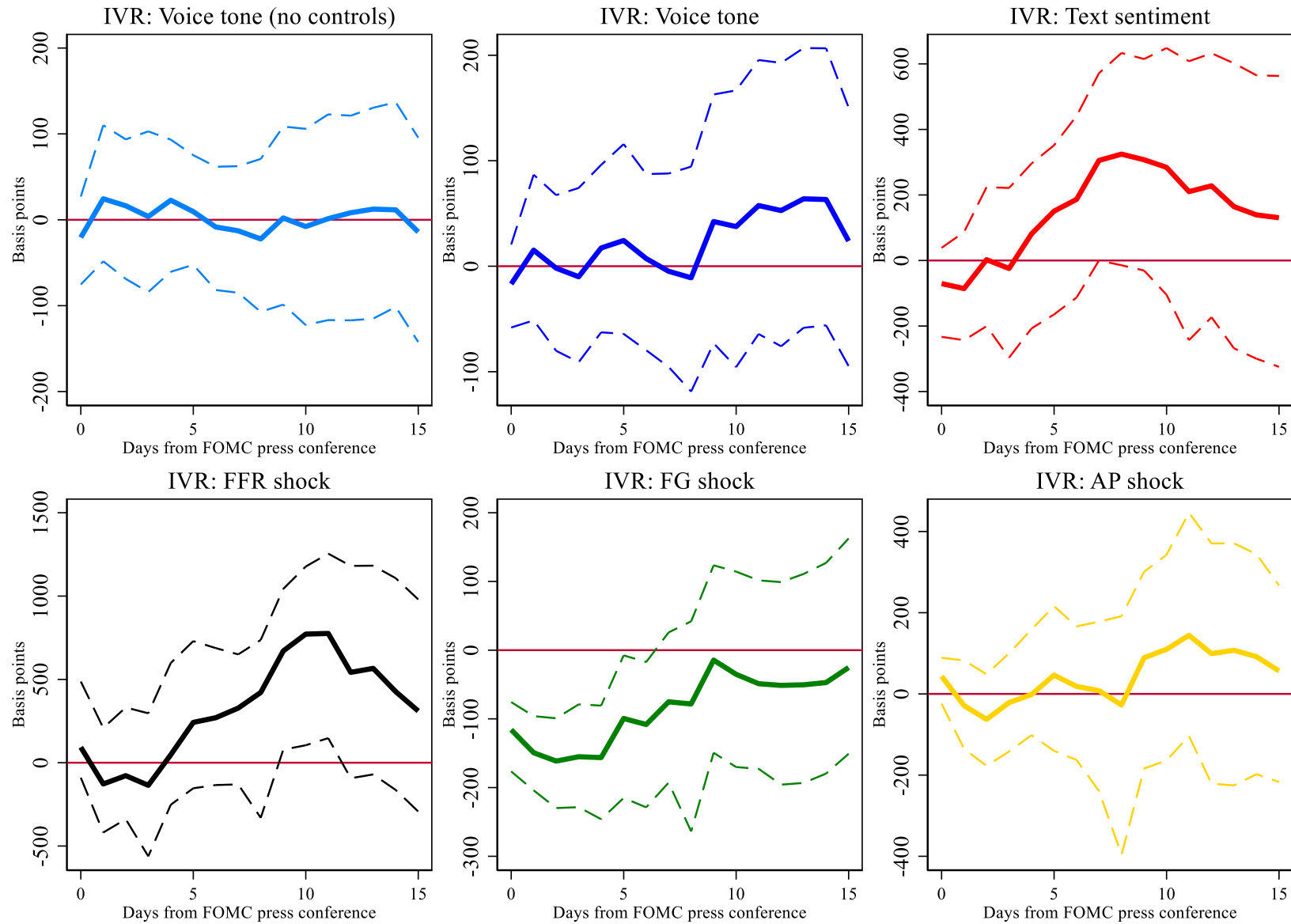
Figure 9. Response of LQD ETF (corporate debt) to policy actions and messages.



Notes: the figure reports estimated slope coefficients  $b$  (Specification (3)) for policy communication/actions. Dashed lines show 90% bootstrap confidence intervals.

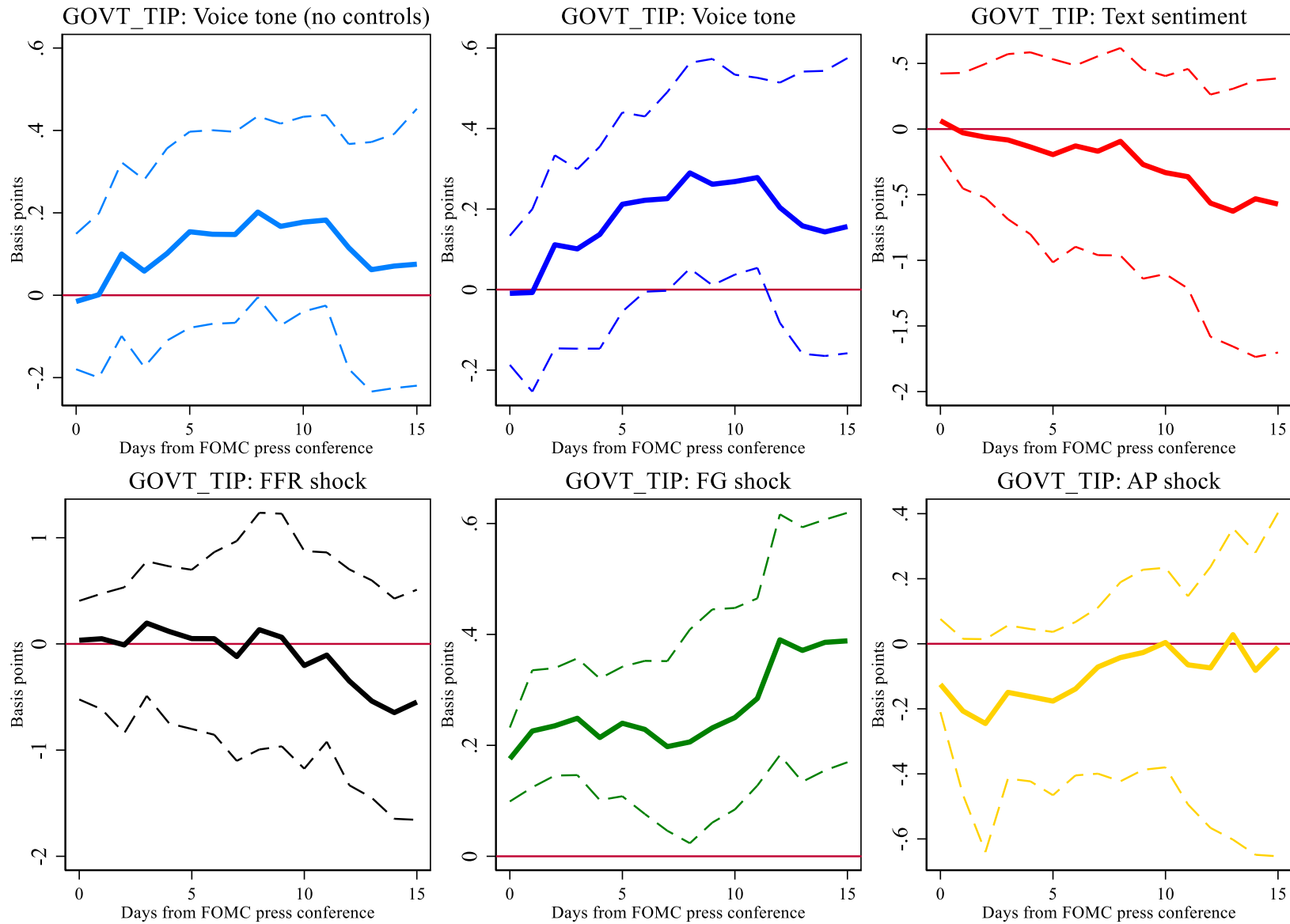


Figure 10. Response of IVR ETF (debt for the real estate sector) to policy actions and messages.



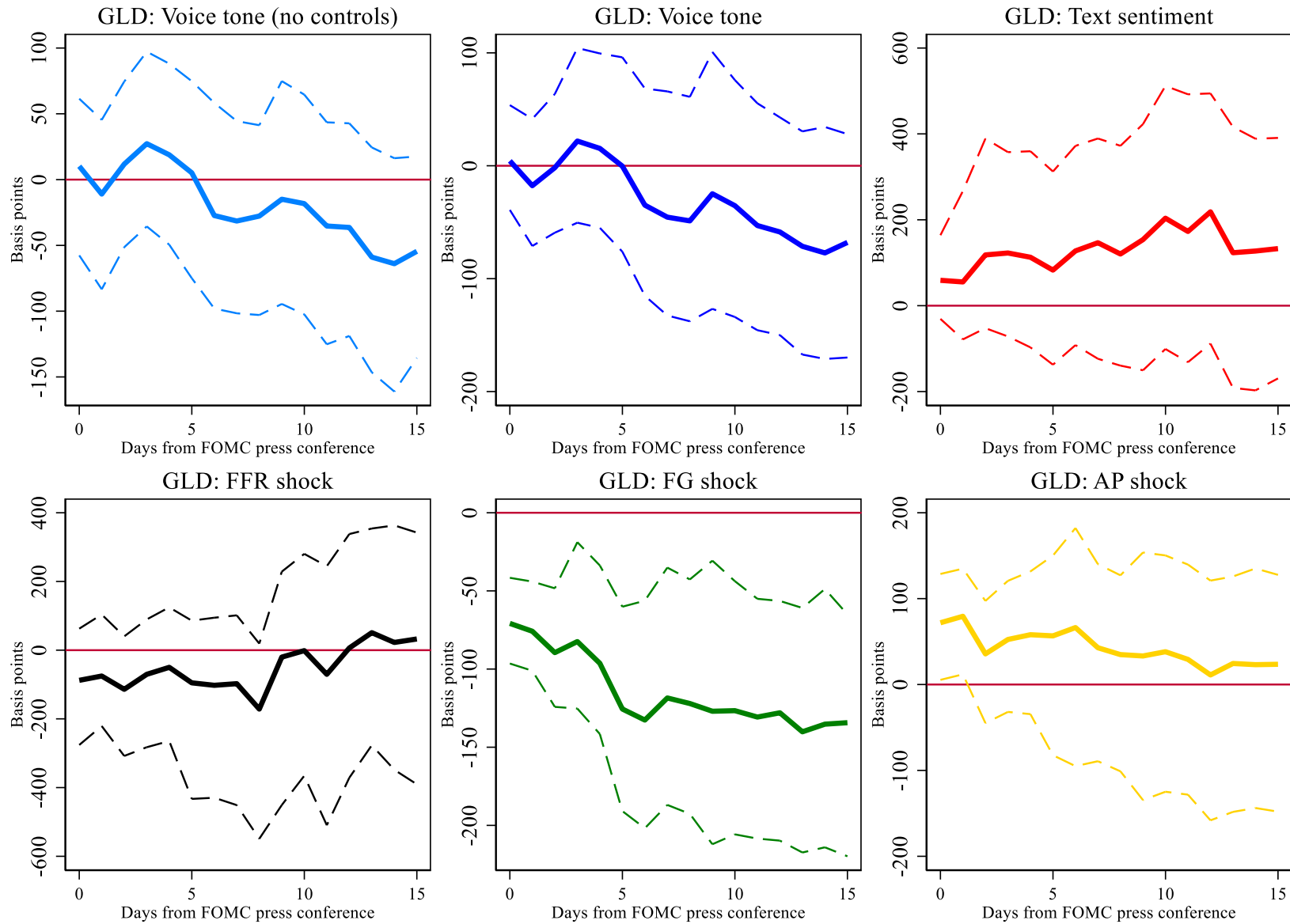
Notes: the figure reports estimated slope coefficients  $b$  (Specification (3)) for policy communication/actions. Dashed lines show 90% bootstrap confidence intervals.

Figure 11. Response of GOVT ETF (nominal U.S. government debt) minus TIP EFT (inflation-protected U.S. government debt) to policy actions and messages.



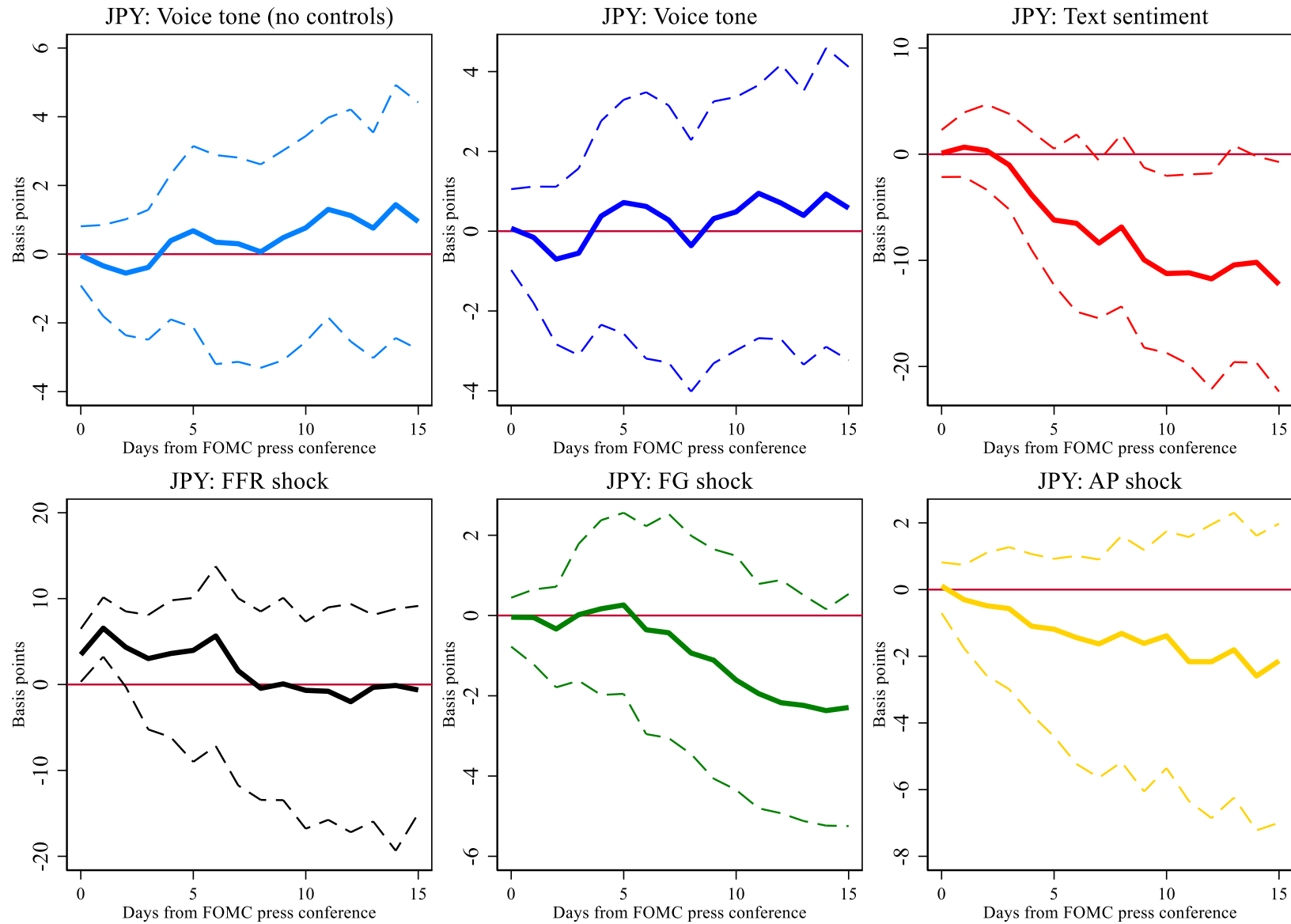
Notes: the figure reports estimated slope coefficients  $b$  (Specification (3)) for policy communication/actions. Dashed lines show 90% bootstrap confidence intervals.

Figure 12. Response of GLD ETF (gold) to policy actions and messages.



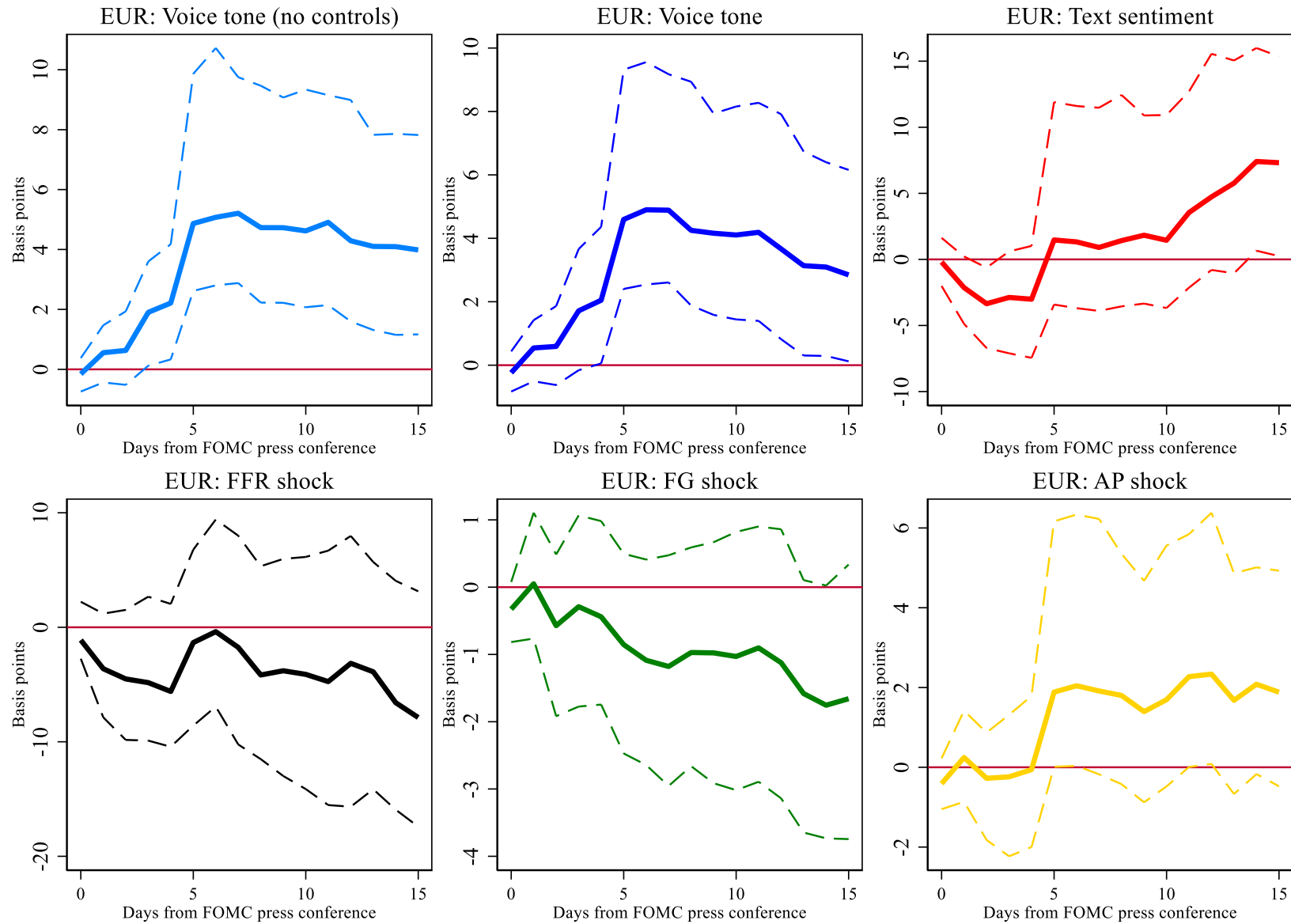
Notes: the figure reports estimated slope coefficients  $b$  (Specification (3)) for policy communication/actions. Dashed lines show 90% bootstrap confidence intervals.

Figure 13. Response of the Japanese Yen to one U.S. Dollar (yen/dollar) exchange rate to policy actions and messages.



Notes: the figure reports estimated slope coefficients  $b$  (Specification (3)) for policy communication/actions. Dashed lines show 90% bootstrap confidence intervals.

Figure 14. Response of the Euro to one U.S. Dollar (euro/dollar) exchange rate to policy actions and messages.



Notes: the figure reports estimated slope coefficients  $b$  (Specification (3)) for policy communication/actions. Dashed lines show 90% bootstrap confidence intervals.

**Online Appendix**  
**Additional Information, Tables, and Figures**

## Appendix A

*Appendix Table A1. Voice tone for responses during Q&A sessions.*

Press conference date	Speaker	Positive responses	Neutral response	Negative responses	Tone
April 27, 2011	Bernanke	17	0	1	0.89
June 22, 2011	Bernanke	19	0	0	1.00
November 2, 2011	Bernanke	19	0	0	1.00
January 25, 2012	Bernanke	18	0	0	1.00
April 25, 2012	Bernanke	19	0	0	1.00
June 20, 2012	Bernanke	22	0	1	0.91
September 13, 2012	Bernanke	23	0	0	1.00
December 12, 2012	Bernanke	20	0	3	0.74
March 20, 2013	Bernanke	14	0	7	0.33
June 19, 2013	Bernanke	10	0	11	-0.05
September 18, 2013	Bernanke	1	0	17	-0.89
December 18, 2013	Bernanke	18	0	3	0.71
March 19, 2014	Yellen	7	5	4	0.19
June 18, 2014	Yellen	2	0	14	-0.75
September 17, 2014	Yellen	2	1	9	-0.58
December 17, 2014	Yellen	1	4	10	-0.60
March 18, 2015	Yellen	15	0	5	0.50
June 17, 2015	Yellen	1	3	13	-0.71
September 17, 2015	Yellen	16	1	1	0.83
December 16, 2015	Yellen	4	1	13	-0.50
March 16, 2016	Yellen	12	1	3	0.56
June 15, 2016	Yellen	11	0	4	0.47
September 21, 2016	Yellen	5	0	14	-0.47
December 14, 2016	Yellen	12	5	3	0.45
March 15, 2017	Yellen	9	1	8	0.06
June 14, 2017	Yellen	7	0	9	-0.13
September 20, 2017	Yellen	4	1	9	-0.36
December 13, 2017	Yellen	1	5	12	-0.61
March 21, 2018	Powell	0	0	20	-1.00
June 13, 2018	Powell	0	0	22	-1.00
September 26, 2018	Powell	9	0	15	-0.25
December 19, 2018	Powell	0	0	21	-1.00
January 30, 2019	Powell	16	2	7	0.36
March 20, 2019	Powell	25	0	1	0.92
May 1, 2019	Powell	18	0	5	0.57
June 19, 2019	Powell	0	0	20	-1.00
July 31, 2019	Powell	0	0	24	-1.00

Notes: This table shows the number of positive, negative, and neutral responses as well as the aggregate voice tone for each press conference in the sample.

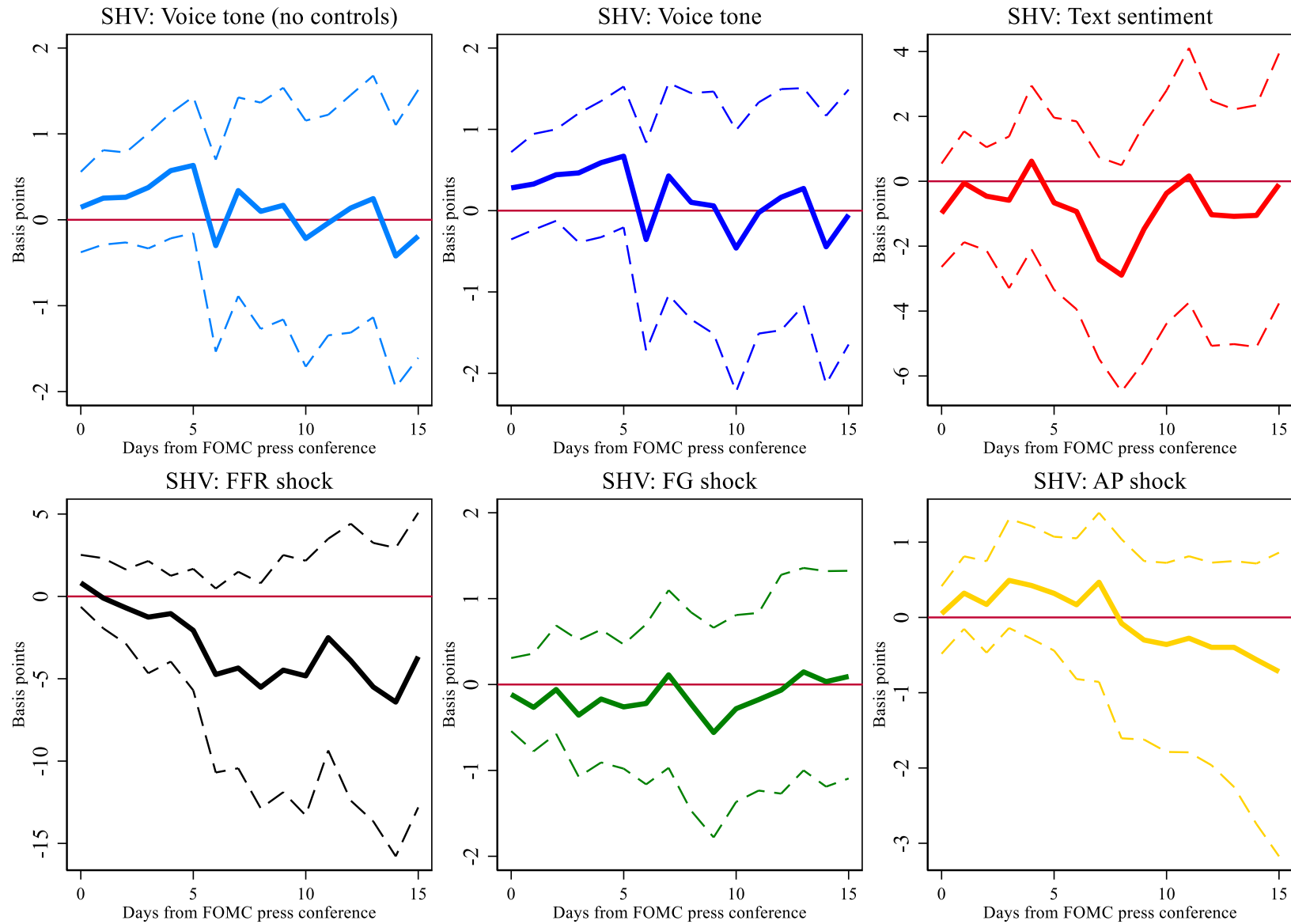
*Appendix Table A2. Text sentiment for statement, remarks and Q&A.*

Press conference date	Speaker	Text Sentiment	Press conference date	Speaker	Text Sentiment
January 26, 2011	Bernanke	0.333	September 17, 2015	Yellen	0.186
March 15, 2011	Bernanke	0.111	October 28, 2015	Yellen	0.000
April 27, 2011	Bernanke	-0.129	December 16, 2015	Yellen	0.000
June 22, 2011	Bernanke	0.137	January 27, 2016	Yellen	0.333
August 9, 2011	Bernanke	-0.200	March 16, 2016	Yellen	-0.059
September 21, 2011	Bernanke	0.000	April 27, 2016	Yellen	0.286
November 2, 2011	Bernanke	0.292	June 15, 2016	Yellen	0.026
December 13, 2011	Bernanke	-0.333	July 27, 2016	Yellen	0.231
January 25, 2012	Bernanke	0.364	September 21, 2016	Yellen	0.031
March 13, 2012	Bernanke	0.000	November 2, 2016	Yellen	0.111
April 25, 2012	Bernanke	0.036	December 14, 2016	Yellen	-0.061
June 20, 2012	Bernanke	0.405	February 1, 2017	Yellen	-0.250
August 1, 2012	Bernanke	0.333	March 15, 2017	Yellen	0.071
September 13, 2012	Bernanke	0.138	June 14, 2017	Yellen	0.073
October 24, 2012	Bernanke	0.125	July 26, 2017	Yellen	0.000
December 12, 2012	Bernanke	0.071	September 20, 2017	Yellen	0.212
January 30, 2013	Bernanke	0.250	November 1, 2017	Yellen	0.143
March 20, 2013	Bernanke	0.000	December 13, 2017	Yellen	0.034
May 1, 2013	Bernanke	0.067	January 31, 2018	Yellen	-0.429
June 19, 2013	Bernanke	0.134	March 21, 2018	Powell	-0.042
July 31, 2013	Bernanke	0.125	May 2, 2018	Powell	-0.333
September 18, 2013	Bernanke	-0.067	June 13, 2018	Powell	0.156
October 30, 2013	Bernanke	-0.067	August 1, 2018	Powell	-0.600
December 18, 2013	Bernanke	0.023	September 26, 2018	Powell	-0.286
January 29, 2014	Bernanke	-0.048	November 8, 2018	Powell	-0.200
March 19, 2014	Yellen	0.258	December 19, 2018	Powell	0.000
April 30, 2014	Yellen	0.077	January 30, 2019	Powell	0.286
June 18, 2014	Yellen	-0.094	March 20, 2019	Powell	0.067
July 30, 2014	Yellen	-0.077	May 1, 2019	Powell	0.333
September 17, 2014	Yellen	-0.127	June 19, 2019	Powell	-0.070
October 29, 2014	Yellen	0.400	July 31, 2019	Powell	0.067
December 17, 2014	Yellen	0.367			
January 28, 2015	Yellen	0.091			
March 18, 2015	Yellen	0.259			
April 29, 2015	Yellen	0.059			
June 17, 2015	Yellen	0.206			
July 29, 2015	Yellen	0.077			

Notes: This table shows the aggregate text sentiment for each FOMC meeting in the sample.

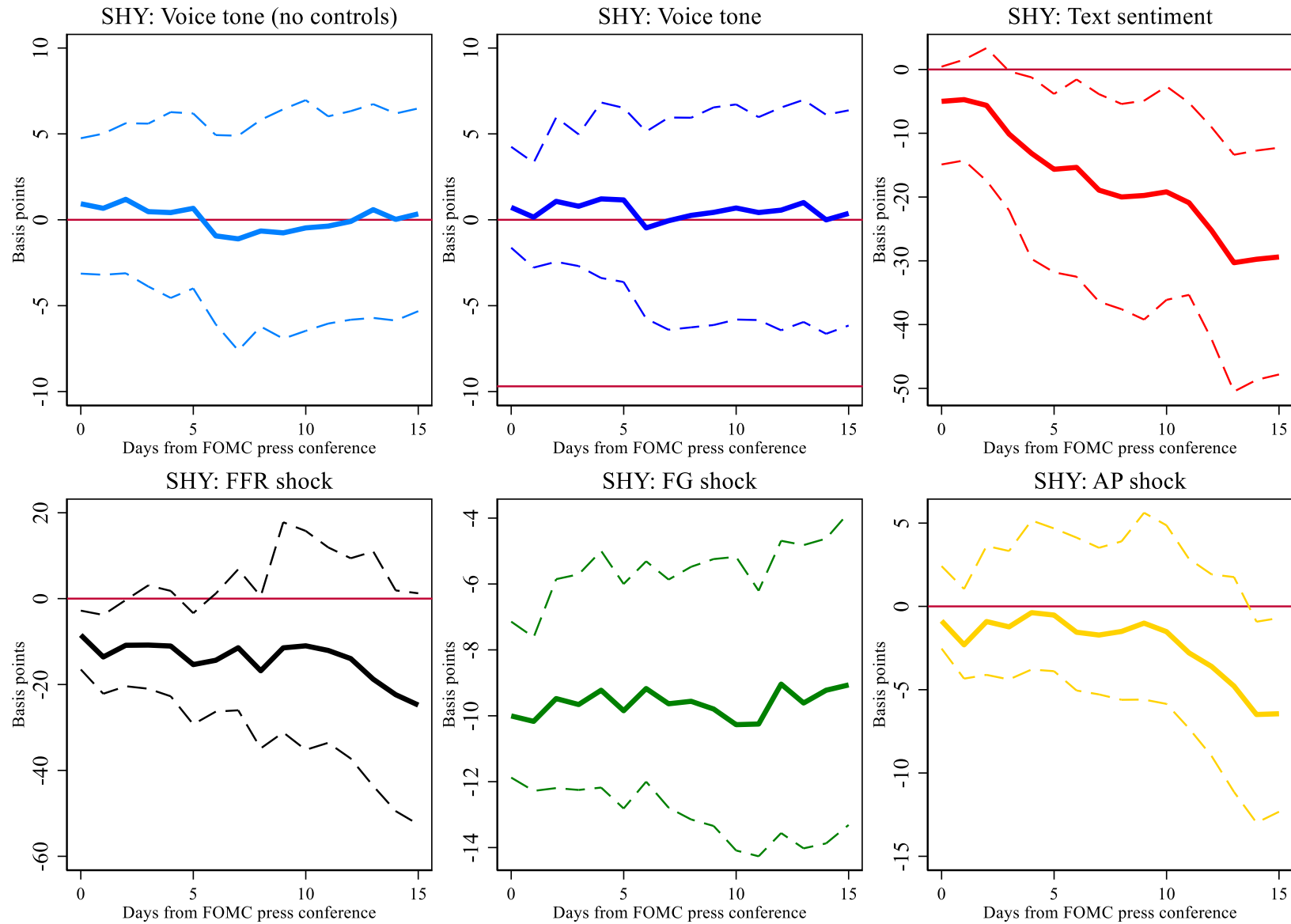


Appendix Figure A1. Response of SHV ETF (Short Treasury Bond ETF; maturities one year or less) to policy actions and messages.



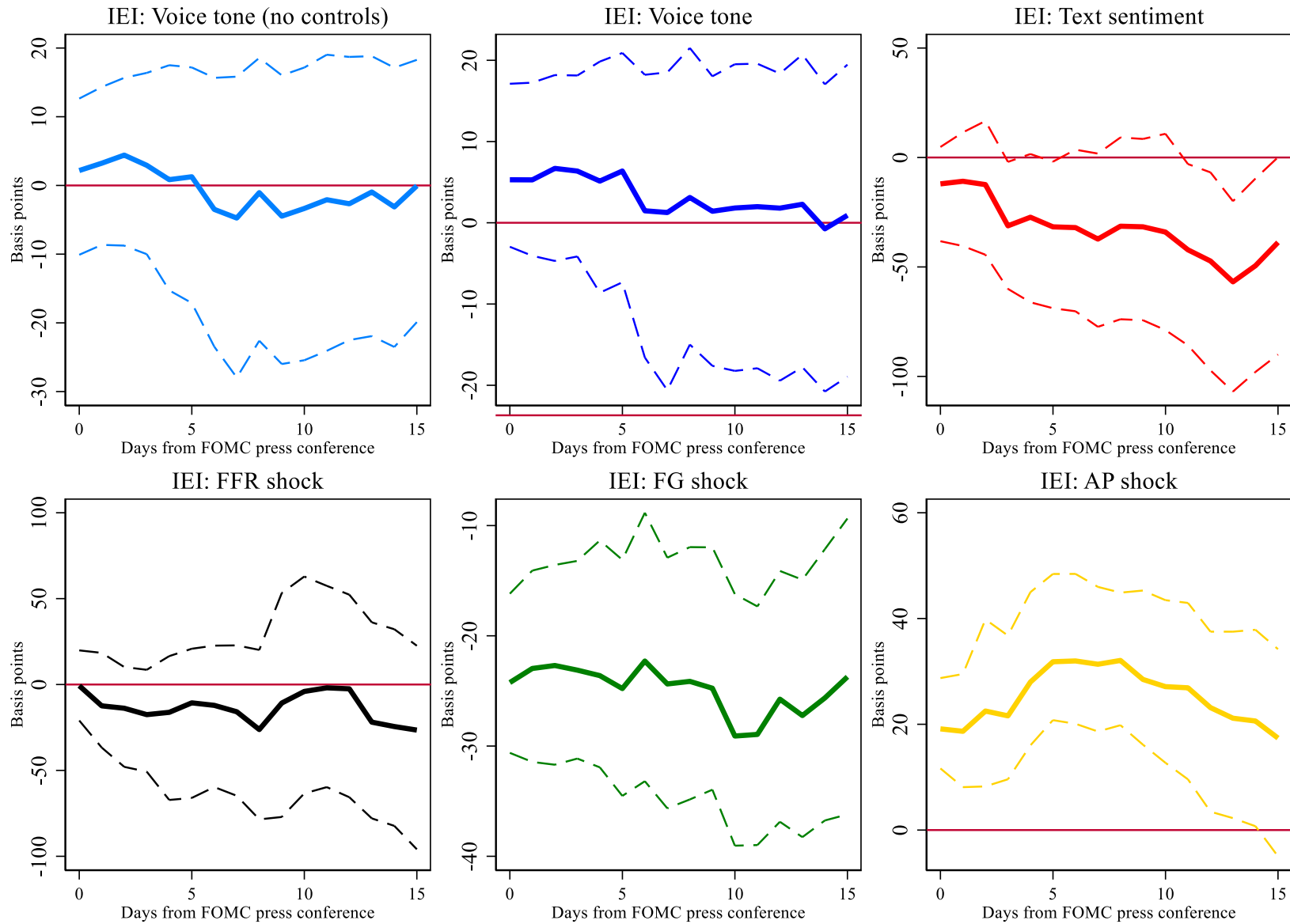
Notes: the figure reports estimated slope coefficients  $b$  (Specification (3)) for policy communication/actions. Dashed lines show 90% bootstrap confidence intervals.

Appendix Figure A2. Response of SHY ETF (1-3 Year Treasury Bond ETF) to policy actions and messages.



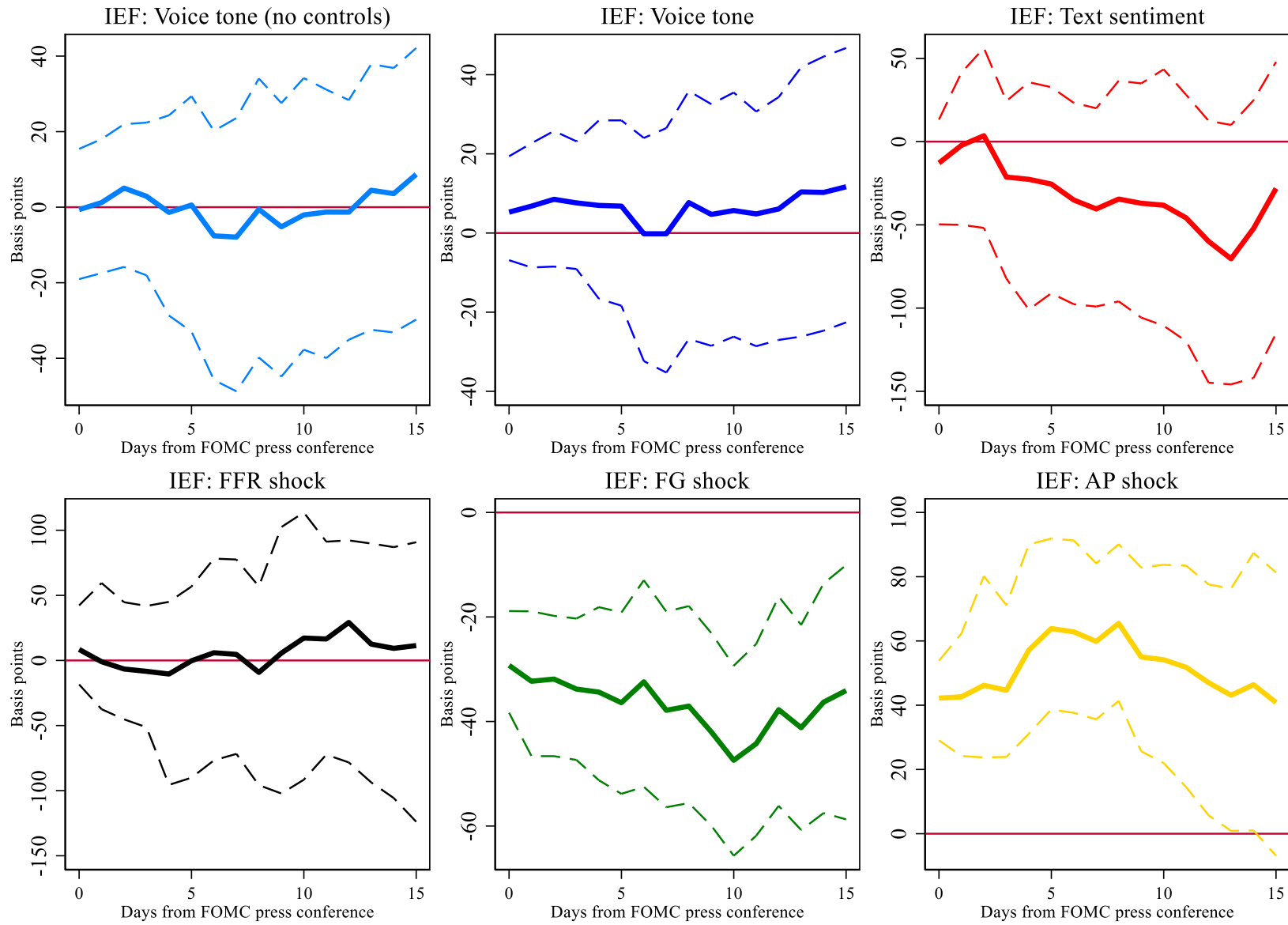
Notes: the figure reports estimated slope coefficients  $b$  (Specification (3)) for policy communication/actions. Dashed lines show 90% bootstrap confidence intervals.

Appendix Figure A3. Response of IEI ETF (3-7 Year Treasury Bond ETF) to policy actions and messages.



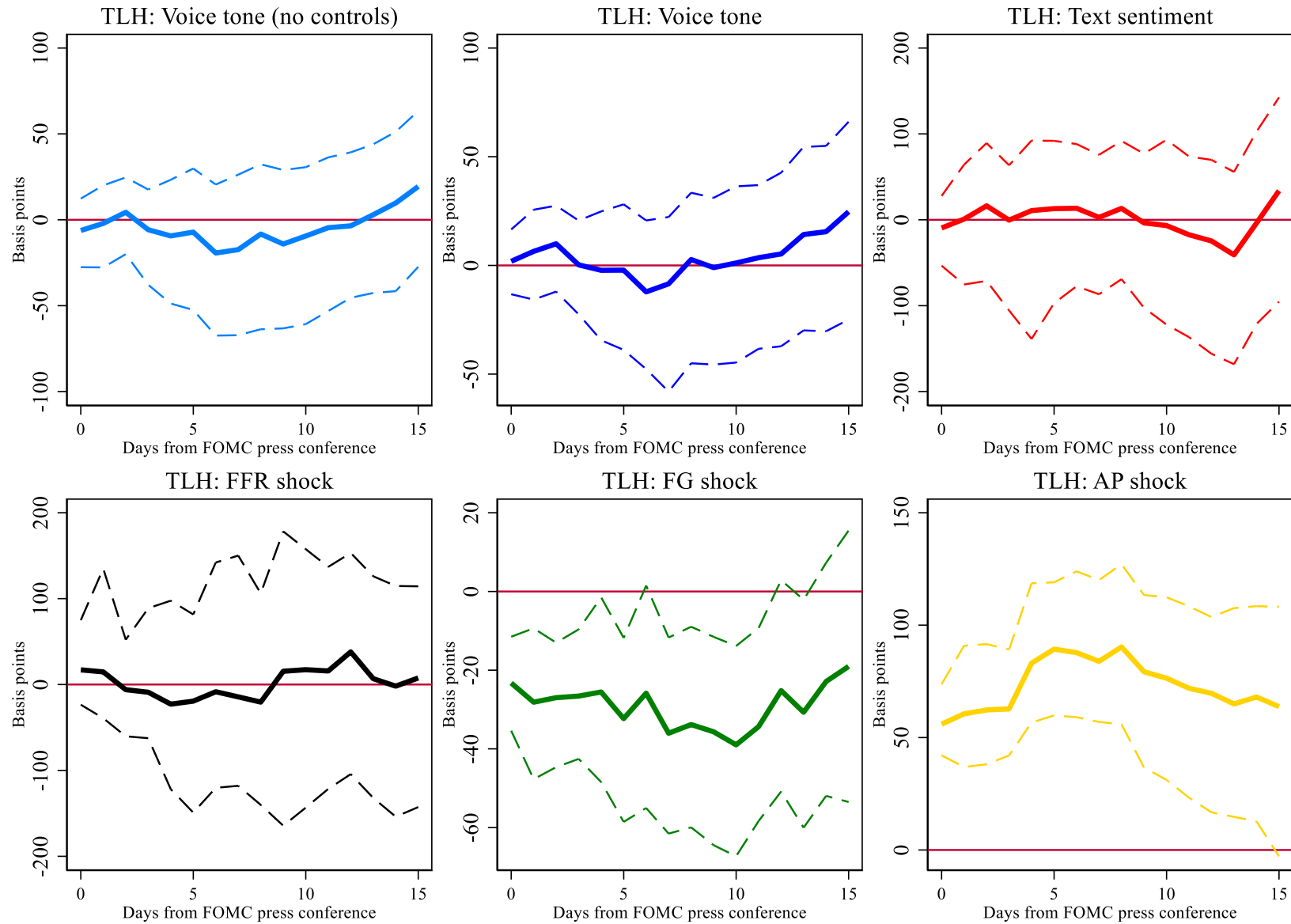
Notes: the figure reports estimated slope coefficients  $b$  (Specification (3)) for policy communication/actions. Dashed lines show 90% bootstrap confidence intervals.

Appendix Figure A4. Response of IEF ETF (7-10 Year Treasury Bond ETF) to policy actions and messages.



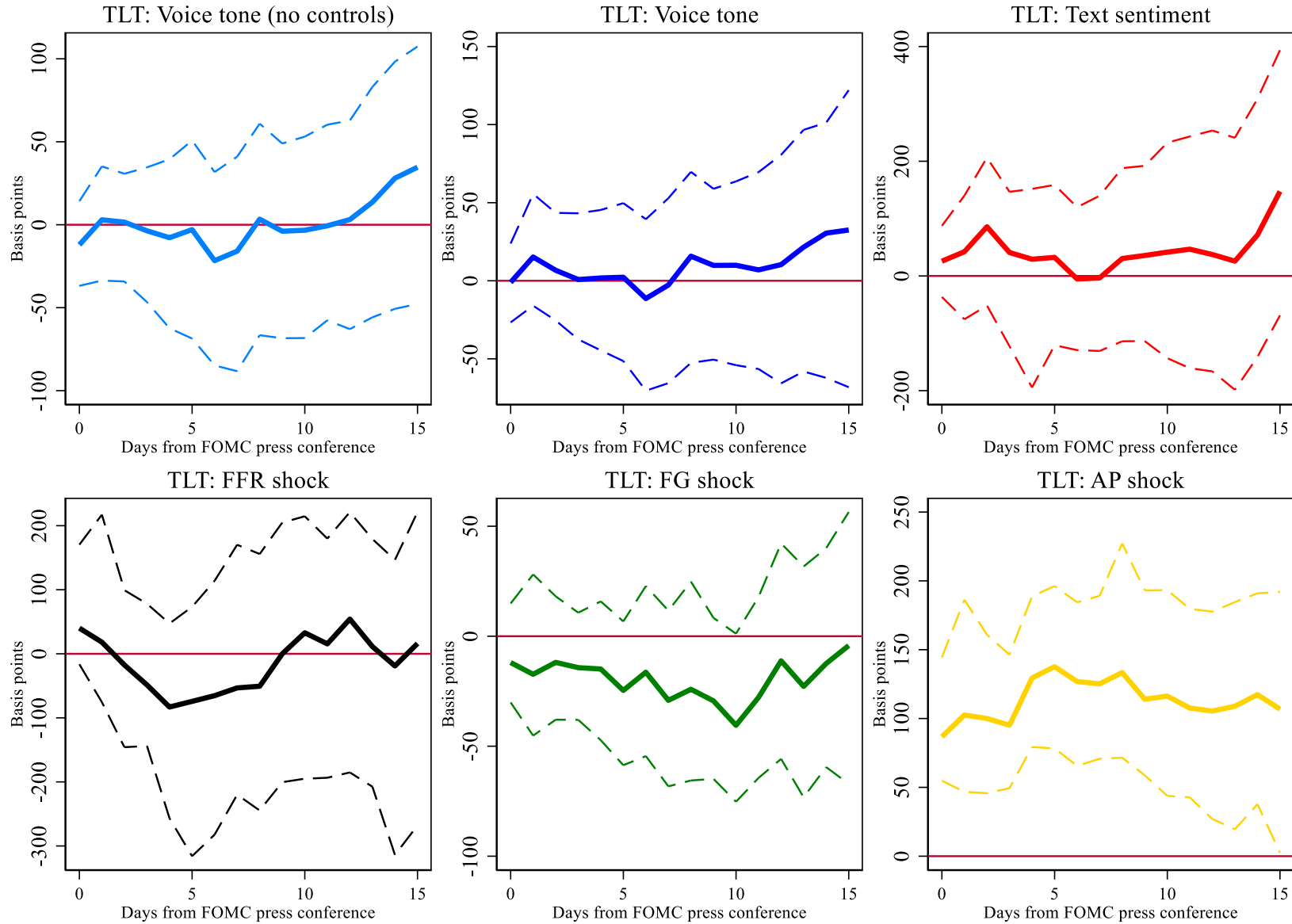
Notes: the figure reports estimated slope coefficients  $b$  (Specification (3)) for policy communication/actions. Dashed lines show 90% bootstrap confidence intervals.

Appendix Figure A5. Response of TLH ETF (10-20 Year Treasury Bond) to policy actions and messages.



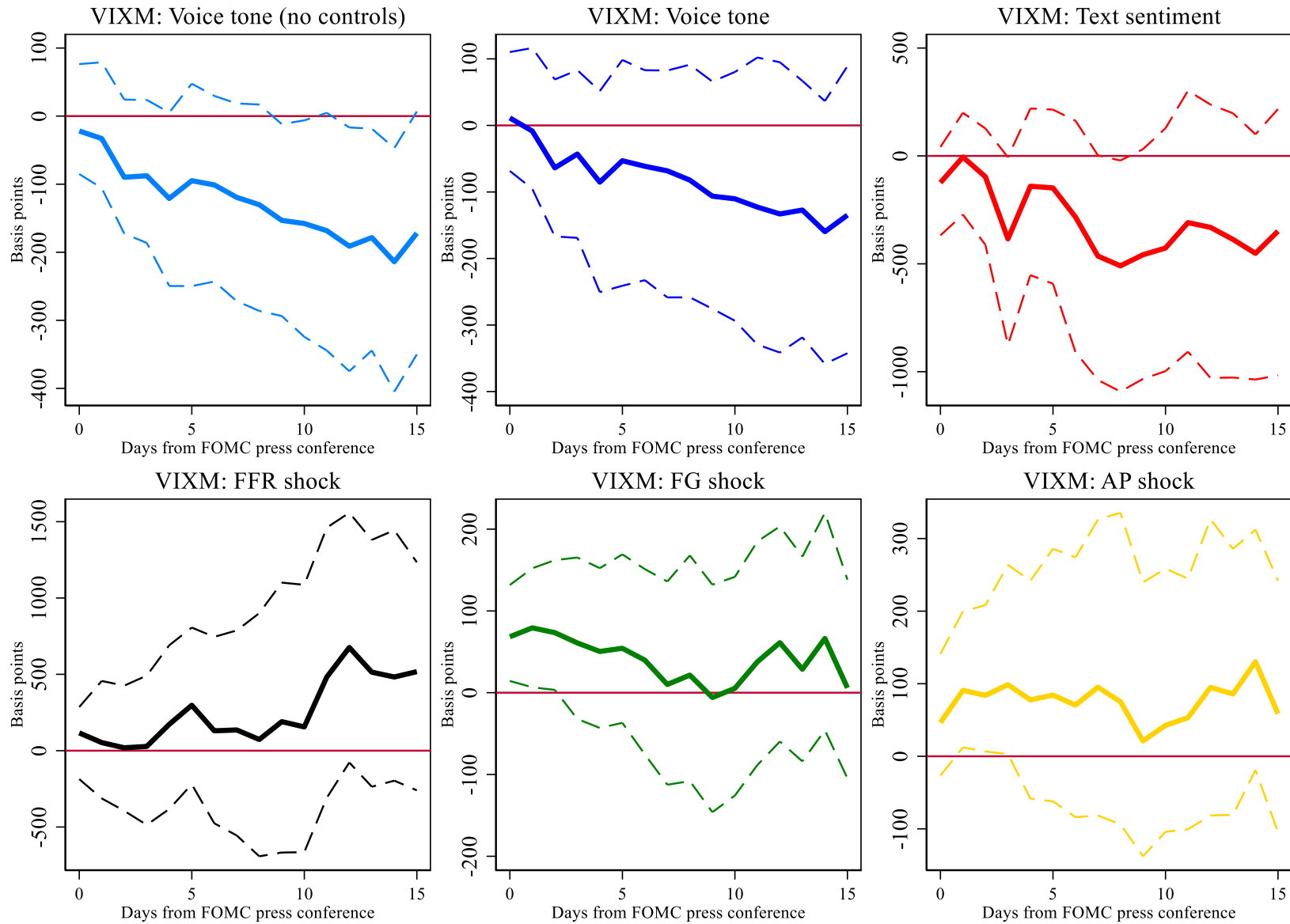
Notes: the figure reports estimated slope coefficients  $b$  (Specification (3)) for policy communication/actions. Dashed lines show 90% bootstrap confidence intervals.

Appendix Figure A6. Response of TLT ETF (20+ Year Treasury Bond ETF) to policy actions and messages.



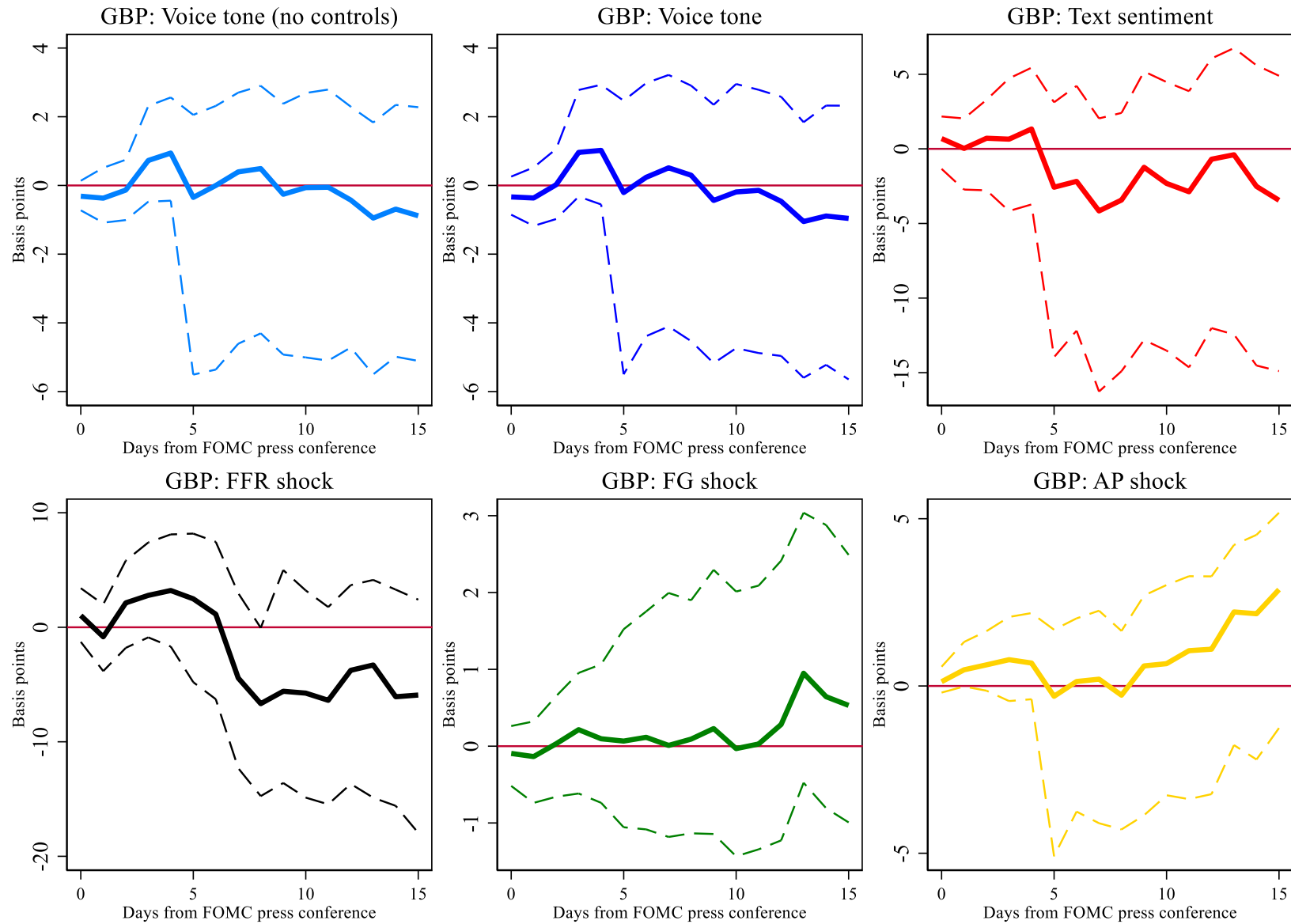
Notes: the figure reports estimated slope coefficients  $b$  (Specification (3)) for policy communication/actions. Dashed lines show 90% bootstrap confidence intervals.

Appendix Figure A7. Response of VIXM ETF (VIX Mid-Term Futures ETF) to policy actions and messages.



Notes: the figure reports estimated slope coefficients  $b$  (Specification (3)) for policy communication/actions. Dashed lines show 90% bootstrap confidence intervals.

Appendix Figure A8. Response of the British Pound to one U.S. Dollar (pound/dollar) exchange rate to policy actions and messages.



Notes: the figure reports estimated slope coefficients  $b$  (Specification (3)) for policy communication/actions. Dashed lines show 90% bootstrap confidence intervals.



## Appendix B

### Audio data

All audio files are converted to 16,000 Hz sample rate and mono channel. When passing the audios into the Librosa package for feature extraction, we use the default frame length (the number of samples in a frame) and the hop length (the number of samples between successive frames) of 2,048 and 512, respectively. Thus, for each audio, the number of frames (or “slices”) used for feature extraction is calculated as:

$$frames_s = \frac{duration_s(in\ seconds) \times 16,000}{512}$$

### Feature extraction

The inputs of our neural network algorithm are essentially the representations of two important vocal aspects namely frequency (or pitch/highness) and amplitude (or volume/loudness). For an audio signal we can extract the following characteristics:

- A Mel frequency spectrogram is the spectrum of frequencies of an audio mapped onto a Mel scale (instead of the frequency scale) time. It allows us to determine the level of loudness of a particular frequency at a particular time.<sup>16</sup>
- A Chromagram is a representation of audio signal in which the spectrum of frequencies is projected onto 12 equal-tempered pitch classes or 12 chroma bands (i.e., C, C#, D, D#, E, F, F#, G, G#, A, A#, and B). The Chromagram reflects the distribution of energy along 12 chroma bands over time, hence, can capture melodic and harmonic characteristics of an audio.
- A Mel-frequency cepstral coefficients (MFCC) is a discrete cosine transformation of the Mel frequency spectrogram.

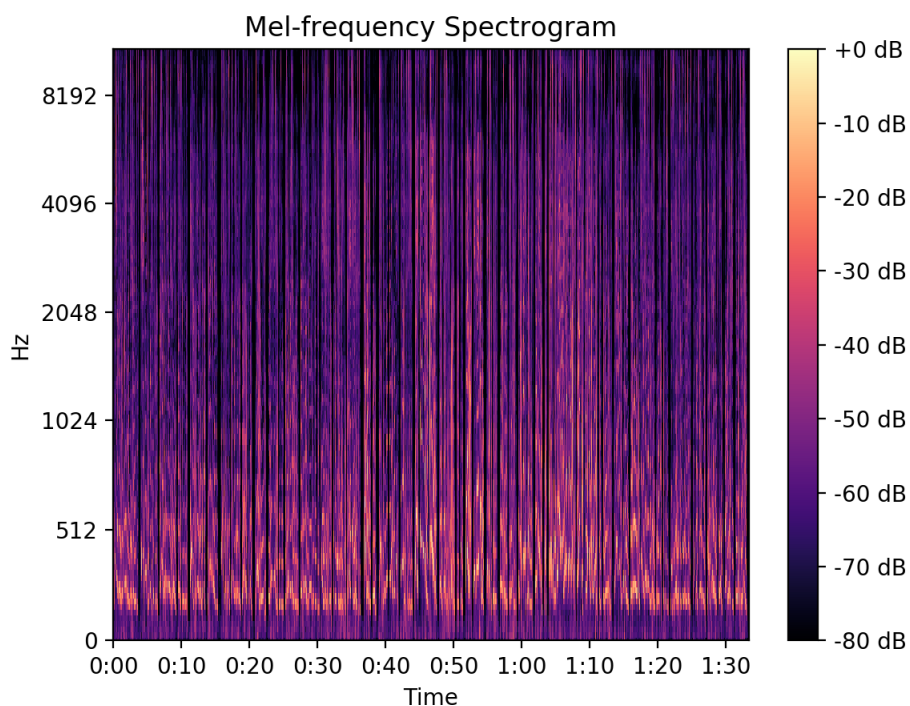
As mentioned in Section 2.1.1, we first extracted a vector of 128 Mel spectrogram coefficients. Appendix Figure B1 presents an example of a Mel spectrogram: the brighter colors around the frequency range of 256 – 512 Hz suggest the stronger (or “louder”) amplitude of such range. Second, the extracted features also include a vector of 40 MFCCs, which are considered the decorrelated versions of the Mel spectrogram. The negative MFCCs indicate that the spectral energy is concentrated at the high frequencies while the positive MFCCs represent the concentration around the low frequencies. This is illustrated in Appendix Figure B2: the majority of cepstral coefficients are positive, corresponding to the stronger amplitude of the 256-512 Hz range suggested in Appendix Figure B1. Finally, the Chromagrams with 12 Chroma coefficients are extracted from the audios. In the example shown in Appendix Figure B3, the pitches are scattered and distributed over all

---

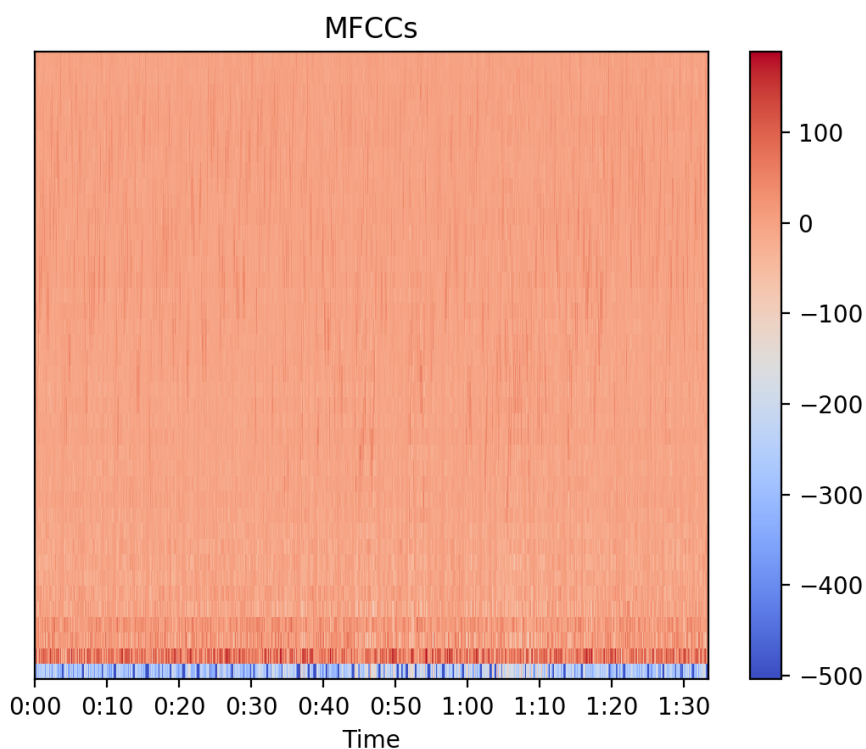
<sup>16</sup> Mel scale is a log transformation of frequencies which “mimic” humans’ perception of sound. That is, pitches of equal distance on the Mel scale are of equal distance when judged by humans.

pitch classes, which reflects the fact that the examined audio is a sample audio book.<sup>17</sup> All obtained features are then averaged over all frames, so that we get a set of 180 features, or inputs, for each audio file.

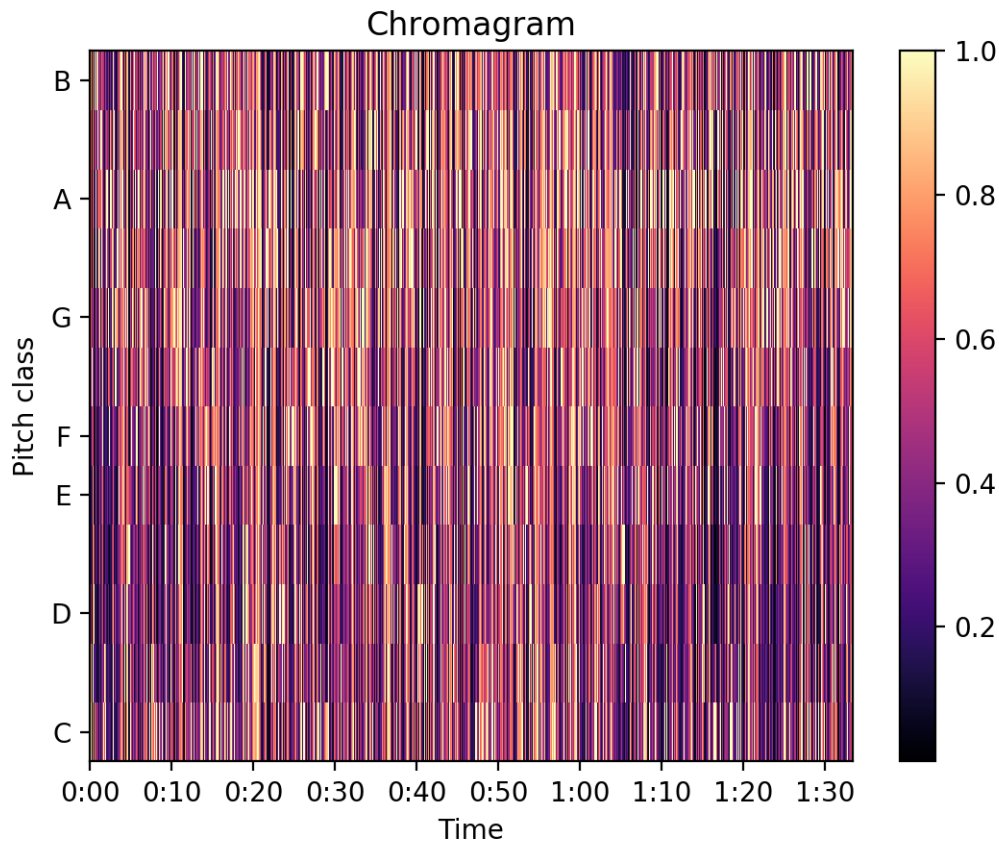
*Appendix Figure B1. Example of Mel-frequency Spectrogram*



*Appendix Figure B2. Example of MFCCs*



<sup>17</sup> This audio can be found at <https://secure.toolkitfiles.co.uk/clients/24554/sitedata/files/AudioBook-Tanya-S-Bartlett.mp3>.



It should be noted that the number of Mel spectrogram coefficients, the number of MFCCs, and the number of chroma coefficients are hyperparameters, which can be adjusted to achieve better-performing algorithm. Similarly, one might ask whether it is necessary to use both Mel Spectrogram Frequencies and MFCCs as the inputs since the latter is essentially derived from the former. Within the scope of our fine-tuning exercise, we find that using both types of features helps improve the accuracy of the model.

In addition, there are other spectral features that could be extracted and used in the neural network. For example, a spectral contrast (Contrast) is the level difference between the mean energy in the top and bottom quantiles of the spectrum. One could also compute tonal centroid of a chroma vector (Tonnetz), in which the chroma features are projected onto a 6-dimensional basis representing the perfect fifth, minor third, and major third.<sup>18</sup> As a part of fine-tuning exercise, we also experimented with using 5 features (Mel spectrogram coefficients, MFCCs, Chromagram, Tonnetz, and Contrast) as the inputs. However, this combination did not help improve the accuracy rate.

### The neural network

We use Keras, a deep learning API run on top of Google's machine learning platform TensorFlow, to build our neural network. In what follows, we will describe the specific model and training parameters of our

<sup>18</sup> See <https://librosa.org/doc/main/feature.html> for more information on various spectral features.

network (the corresponding Python codes are presented in Appendix Table B1). This network is trained on 80% of TESS and RAVDESS data and validated on the remaining 20%. It is worth noting that all reported parameters are hyperparameters, which can be fine-tuned to improve the algorithm.

### ***Model parameters***

Our neural network is a fully connected network with 2 hidden layers. It means that every node in one layer is connected to every node in the next layer.

- The input layer has 180 nodes which are 180 features (128 Mel coefficients, 40 MFCCs, and 12 chroma coefficients).
- The first hidden layer has 200 nodes which are connected with 180 nodes in the input layer through the linear activation function.
- The second hidden layer has 200 nodes which are connected with 200 nodes in the first hidden layer through the linear activation function.
- The output layer has 5 nodes representing 5 emotions (happy, pleasantly surprised, neutral, sad, and angry). Given that our task is a multi-class classification task, we use the softmax activation function (normalized exponential function), which is a logistic function, to connect the nodes in this layer with 200 nodes in the second hidden layer.
- To prevent overfitting, 3 Dropout layers with a dropout rate of 0.3 are added after the input layer and each of the hidden layers. This means that 30% of inputs are randomly set to 0 at each step during training time (hence, only 70% of inputs are retained for training).

### ***Training parameters***

- The number of training epochs is 2,000. It means that the entire training dataset is passed forward and backward through the network 2,000 times.
- Batch size is 64. It means that 64 training audio files are propagated through the network (i.e., processed) before the model’s weights are updated.
- How the weights are updated are determined by an optimization algorithm. In this study, we use the adaptive moment estimation (Adam) with the default learning rate of 0.001 as the optimizer.
- The loss function, or the error function, is used to optimize the parameter values. Given the multi-class classification task, we use the categorical cross-entropy function which minimizes the distance between the distribution over pre-defined emotions and the “model” distribution over predicted emotions.

To evaluate the model, we use the following formula to calculate the accuracy rate:

$$Accuracy(y, \hat{y}) = \frac{1}{n_{samples}} \sum_{i=0}^{n_{samples}-1} 1(\hat{y}_i = y_i)$$

The accuracy rate of the model used for analysis is 84%. When applying this formula for each of the emotion classes, we get the accuracy score of 87%, 84%, 74%, 87%, and 80% for angry, sad, neutral, pleasantly surprised, and happy, respectively.

*Appendix Table B1. Python codes*

```
import keras
from keras.layers import Dense, Dropout
from keras.models import Sequential
from keras.callbacks import ModelCheckpoint, TensorBoard

# Parameters
target_class = 5
dense_units = 200
dropout = 0.3
loss = 'categorical_crossentropy'
optimizer = 'adam'
batch_size = 64
epochs = 2000
# Create model
model = Sequential()
model.add(Dense(dense_units, input_shape=(None, input_length))) #Input layer
model.add(Dropout(dropout))

model.add(Dense(dense_units)) # Hidden layer 1
model.add(Dropout(dropout))

model.add(Dense(dense_units)) #Hidden layer 2
model.add(Dropout(dropout))

model.add(Dense(target_class, activation='softmax')) # Output layer

# Compile model
model.compile(loss=loss, metrics=['accuracy'], optimizer=optimizer)

#Fit the model
checkpointer = ModelCheckpoint(model_name, save_best_only=True, monitor='val_loss')
tensorboard = TensorBoard(log_dir=log_path)
```

```
model_training=model.fit(x_train, y_train, batch_size=batch_size, epochs=epochs,  
validation_data=(x_test, y_test), callbacks=[checkpointer, tensorboard])
```